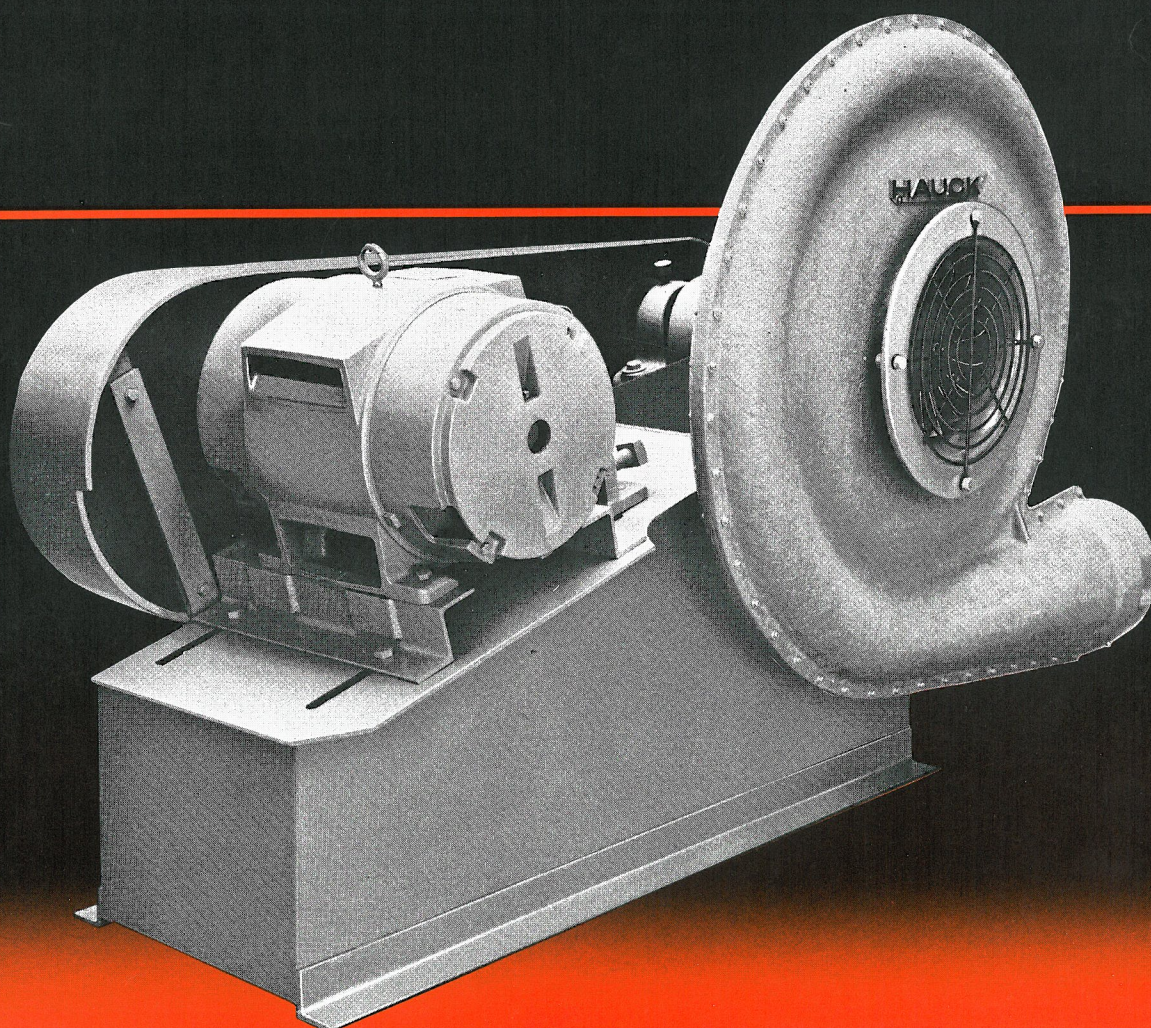

TBAB BELT DRIVE TURBO BLOWERS

Belt drive fiberglass-housed blowers in pressure ranges from 7 to 40 osig and capacities from 90 to 90,000 cfm, "tailored" to meet precise air handling requirements.



HAUCK



HAUCK TBAB BELT DRIVE TURBO BLOWER

HIGH PERFORMANCE - LOW COST—Hauck TBAB Belt Drive Fiberglass Turbo Blower offers more cfm at less cost.

WIDE PRESSURE-VOLUME RANGE—Hauck's TBAB Turbo Blower now offers a wide range of pressure & cfm. Pressures 7 to 40 osig and cfm from 90 to 90,000 assures positive selection of the proper blower size for your specific requirements.

99 TBAB BLOWER-MOTOR COMBINATIONS—The Hauck TBAB Turbo Blower is manufactured in 20 sizes. Coupled with 17 motor sizes, this produces 99 combinations of blower and motor for the broadest line marketed. Motors available with either CW or CCW rotation. Fourteen (14) discharge positions, which can be easily changed in the field.

ENGINEERING/CONSTRUCTION—Hauck Fiberglass Turbo Blowers are the product of quality engineering and rugged construction. The precision turbine type impeller and molded involute scroll combine to produce the highest efficiencies available today. This, of course, means lowest operating costs. The heavy rugged construction used throughout the TBAB series assures you years of trouble-free service.

EASY MAINTENANCE—Although the Hauck TBAB Turbo Blower is relatively maintenance free, preventative maintenance is required. Special care has been taken to ensure ease of these requirements. Heavy duty, high speed bearings are readily accessible for lubrication. Easy, one step, positive motor adjusting rails, (furnished on Arrangement No. 9) for maintaining proper belt tension are featured. Installation and maintenance instruction sheets are furnished with each blower and, if followed, will provide years of trouble-free duty.

EASY SELECTION—In order to select proper size blower you must know the following information:

1. Capacity (cu. ft/min)
2. Pressure of System Resistance (inches w.c.)
3. Air Density - Performance ratings shown in Multi-Rating Tables are based on standard air at blower inlet with a density at .0749 lbs. per cu. ft. - See Table 1 for variations from standard density condition.

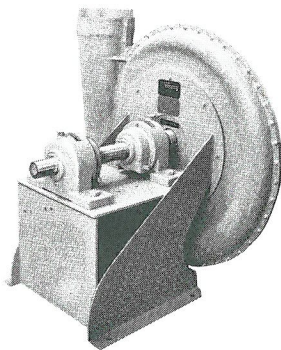
Select proper blower from Quick Selection Chart (page 4). For specific speed and hp requirements, refer to Multi-Rating Tables.

TESTED DESIGN—Hauck TBAB Multi-Rating Tables are based on tests conducted in accordance with ASME PTC 10-1965. This standard exceeds the requirements of AMCA Bulletin 210 code. Tests were conducted with open inlet and ducted discharge.

All ratings shown in multi-rating tables include losses caused by bearing friction and drives. (Motor Shaft Horsepower shown as MHP)

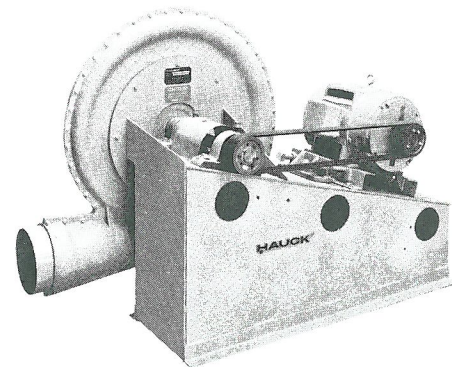
It is common practice to show HP as BHP (horsepower required at blower shaft). Hauck has provided you with exact information showing MHP (horsepower required at motor shaft), not a theoretical rating which disregards the losses of driving components. Therefore, motor may be selected from multi-rating tables without fear of undersizing due to hidden losses.

ARRANGEMENTS



Arrangement No. 1 (Model - TBAB1)

Consists of two (2) heavy duty outboard bearings mounted on a steel pedestal. Impeller is overhung. Shaft extends beyond the pedestal and is keyed for V-Belt Drive or coupling mounting (Direct Drive).



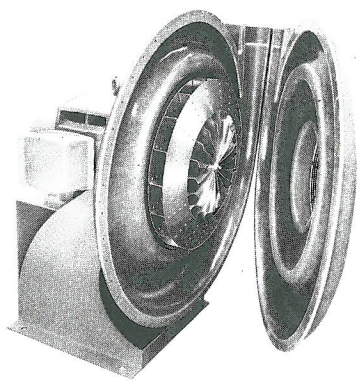
Arrangement No. 9 (Model - TBAB9)

Consists of two (2) heavy duty outboard bearings mounted on a steel pedestal. Impeller is overhung. Motor is mounted on side of bearing pedestal. (See page 6 for standard mounting positions) for self contained V-Belt Drive unit.

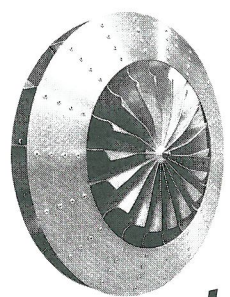


HAUCK®

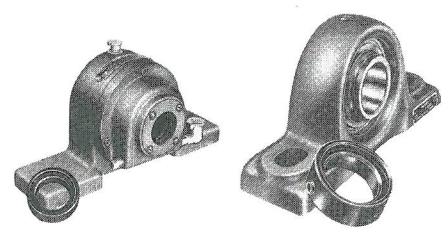
CONSTRUCTION FEATURES



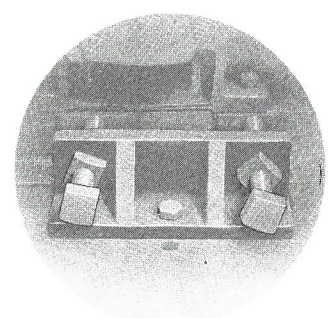
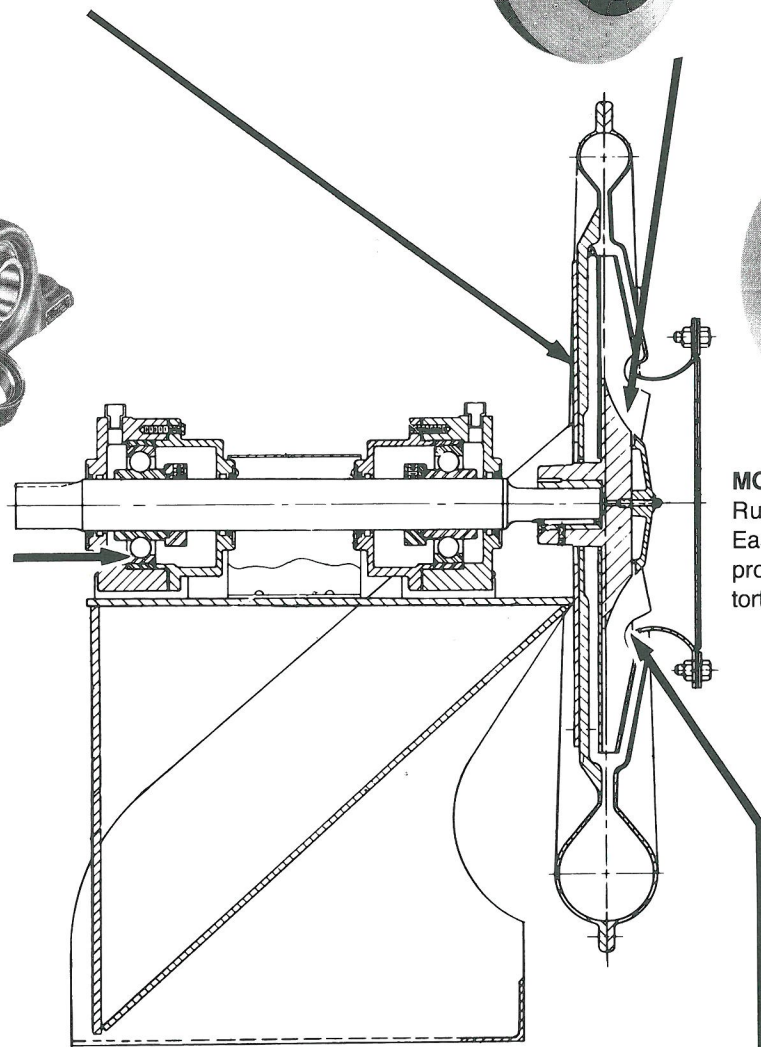
FIBERGLASS CASING:
Highly efficient involute scroll design. Laminated lining bonded to casing interior has greater abrasive resistance than steel and eliminates need for gasketing.



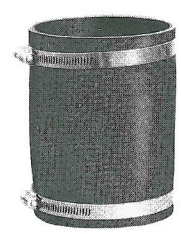
TURBINE DESIGN IMPELLER:
Fabricated of heavy gauge aluminum, riveted construction. Precision Turbine type design. Radial bladed with inlet inducer. (Pat. No. 3,572,967)



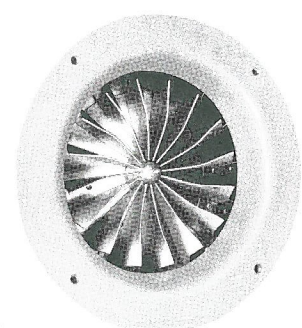
SHAFT & BEARINGS:
Computer sized shaft and bearings. Shafts are fully machined. Bearings are heavy duty high speed for long life, trouble-free operation.



MOTOR SLIDE RAILS:
Rugged steel construction. Easy positive adjustment for proper belt tension with no distortion.



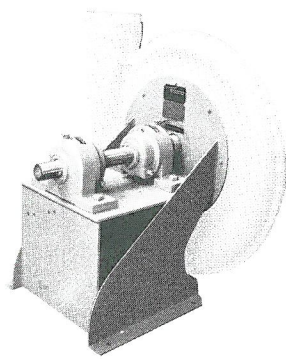
FLEXIBLE CONNECTIONS:
Flexible outlet sleeve and clamps are furnished as standard equipment to prevent vibration from other equipment being transmitted to blower. Blower should not be piped solid.



INLET:
The inlet turning ring seal (Pat. No. 3,572,963) combined with the curved inlet inducer impeller blade produce efficiencies heretofore unobtainable in Turbo Pressure Blower design. Steel inlet guard furnished as standard equipment (not shown).



BELT GUARD:
Furnished as standard equipment on Arrangement No. 9 only. Fabricated of heavy reinforced fiberglass.

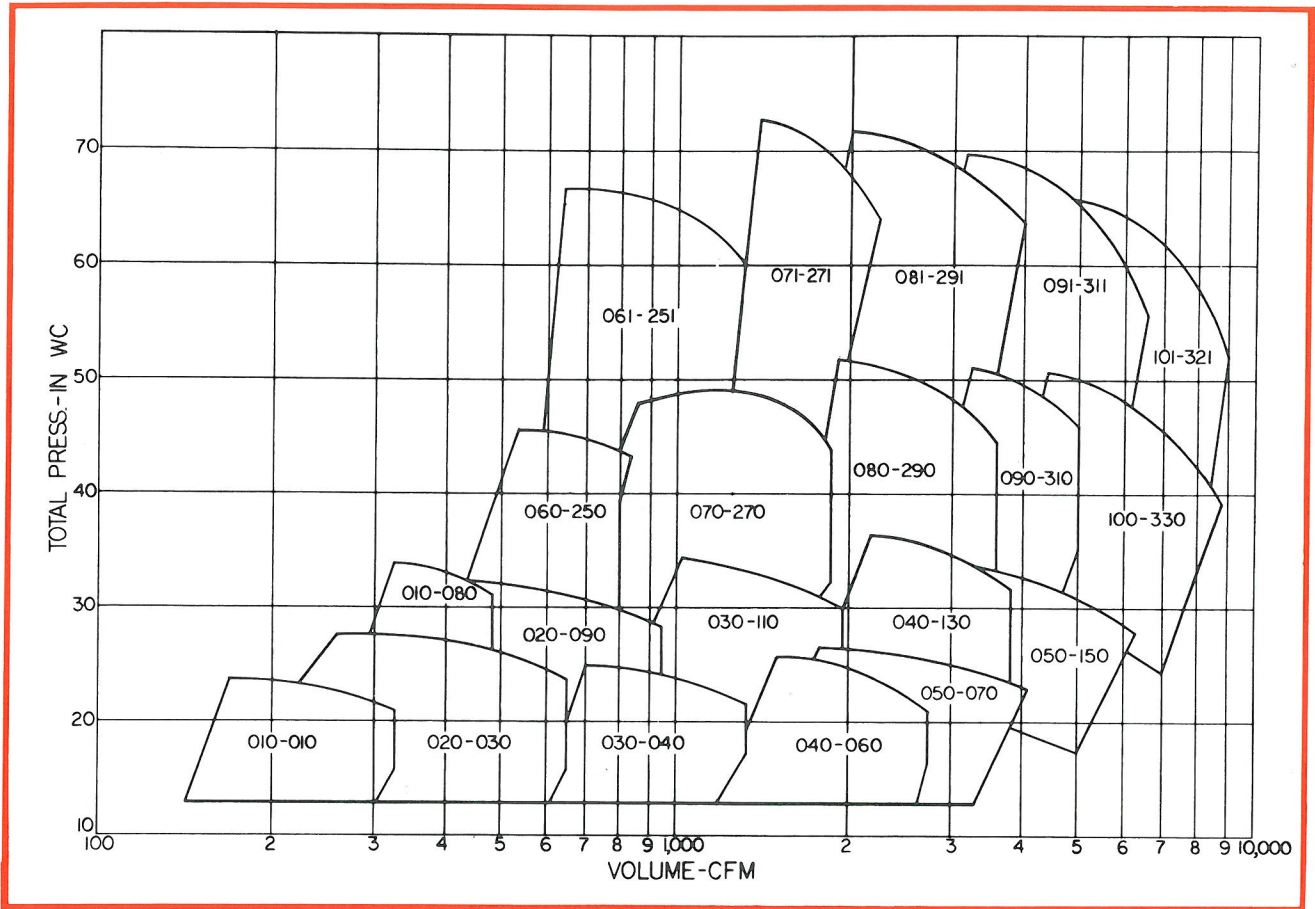


BEARING BASE:
All welded heavy steel construction well braced to eliminate vibration or distortion. Arrangement No. 9 base is braced to support motor as integral unit.

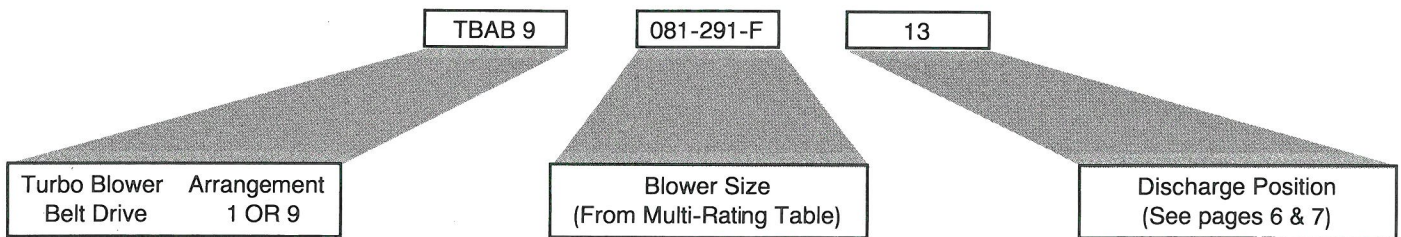
HAUCK QUICK SELECTION CHART

The Quick Selection Chart below combines considerations of first cost and operating cost to allow the user to select the proper blower for the application. To determine proper size blower, plot intersection of volume (cfm) and pressure.

EXAMPLE: The intersection of 3040 cfm and 60" total pressure will be found in block labelled 081-291. Refer to Multi-Rating Table for blower size 081-291 for RPM & MHP. In this example, Multi-Rating Table shows blower 081-291-F will produce 3040 cfm at 60" TP at 4145 RPM and 44.7 MHP.



BLOWER MODEL NUMBER SELECTION



ORDERING INFORMATION

To ensure proper and accurate processing of your order, the following information is required:

1. Catalog Blower Model Number
2. Performance Data (cfm, pressure, RPM, and MHP)
3. Special altitude or temperature conditions (See page 5)
4. Accessories required (See page 28)
5. Motor Electrical Specifications (if motor furnished by other than Hauck, specify frame size).
6. V-Belt Drive Selection (if V-Belt Drive furnished by other than Hauck, provide complete spec. of drives).
7. Function — Brief description of system & blower function.



TABLE 1

CORRECTION FACTOR TABLE

AIR TEMP. DEG. F.	ALTITUDE IN FEET ABOVE SEA LEVEL																			
	0	500	1000	1500	2000	2500	3000	3500	4000	4500	5000	5500	6000	6500	7000	7500	8000	8500	9000	10000
-60 ⁰	.75	.77	.78	.80	.81	.83	.84	.86	.87	.89	.90	.92	.94	.96	.98	1.00	1.02	1.03	1.06	1.09
-40 ⁰	.79	.81	.82	.84	.85	.87	.89	.90	.92	.93	.95	.97	.99	1.00	1.03	1.05	1.07	1.08	1.11	1.15
-20 ⁰	.83	.85	.86	.88	.90	.91	.93	.95	.96	.98	1.00	1.01	1.04	1.05	1.08	1.09	1.12	1.14	1.16	1.20
0 ⁰	.87	.89	.91	.92	.94	.96	.98	.99	1.01	1.03	1.05	1.06	1.09	1.10	1.13	1.15	1.17	1.19	1.22	1.26
40 ⁰	.94	.96	.98	1.00	1.02	1.04	1.06	1.08	1.10	1.12	1.14	1.16	1.19	1.21	1.23	1.26	1.28	1.30	1.32	1.36
70 ⁰	1.00	1.02	1.04	1.06	1.08	1.10	1.12	1.14	1.16	1.18	1.20	1.22	1.25	1.27	1.30	1.32	1.35	1.37	1.40	1.45
80 ⁰	1.02	1.04	1.06	1.08	1.10	1.12	1.14	1.16	1.19	1.21	1.23	1.26	1.28	1.30	1.33	1.36	1.38	1.41	1.43	1.48
100 ⁰	1.06	1.08	1.10	1.12	1.14	1.16	1.19	1.21	1.23	1.25	1.28	1.30	1.33	1.35	1.38	1.41	1.43	1.46	1.48	1.54
120 ⁰	1.09	1.12	1.14	1.16	1.18	1.20	1.23	1.25	1.28	1.30	1.32	1.35	1.38	1.40	1.43	1.46	1.48	1.51	1.53	1.58
140 ⁰	1.13	1.15	1.18	1.20	1.22	1.25	1.27	1.29	1.32	1.34	1.37	1.40	1.42	1.45	1.48	1.51	1.54	1.57	1.58	1.65
160 ⁰	1.17	1.19	1.22	1.24	1.26	1.29	1.31	1.34	1.36	1.39	1.42	1.44	1.47	1.50	1.53	1.56	1.59	1.62	1.64	1.70
180 ⁰	1.21	1.23	1.26	1.28	1.30	1.33	1.36	1.38	1.41	1.43	1.46	1.49	1.52	1.55	1.58	1.61	1.64	1.67	1.70	1.75
200 ⁰	1.25	1.27	1.29	1.32	1.34	1.37	1.40	1.42	1.45	1.48	1.51	1.54	1.57	1.60	1.63	1.66	1.69	1.72	1.75	1.81

The above composite table shows density correction factors for temperature and altitude. Performance ratings shown in this bulletin have been calculated for standard air density of .0749 lbs./cu. ft. (70° F. @ 29.92" barometric pressure). When density is other than standard, corrections for pressure and horsepower must be made.

EXAMPLE: Requirement — a blower to deliver 3040 ICFM at 16" pressure at 120° F. and 3500 ft. altitude.

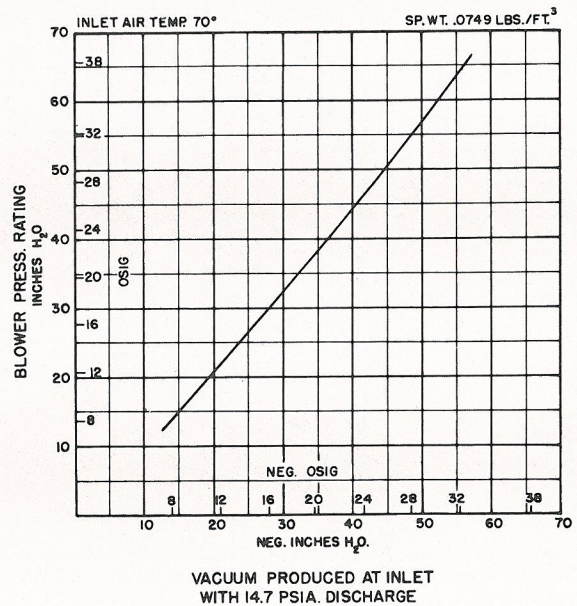
1. Density correction (Table 1) indicates a factor of 1.25 for 120° F. and 3500 ft. altitude.

2. 16" x 1.25 = 20"
3. From Quick Selection Chart on Page 4 select model TBAB-050-070.
4. From Multi-Rating Table for Model TBAB-050-070 (Page 16) select blower requirements for 3040 ICFM at 20" pressure = 3337 RPM and 14.6 MHP.
5. Divide pressure and hp shown by 1.25 for performance at elevated temperature and altitude. Corrected selection will deliver 3040 ICFM at 16" pressure at 120° F. and 3500 ft. altitude, with speed of 3337 and MHP of 11.7.

TABLE 2 PRESSURE CONVERSION TABLE

O.S.I. to IN. W.C.				IN. W.C. to O.S.I.			
O.S.I.	IN. W.C.	O.S.I.	IN. W.C.	IN. W.C.	O.S.I.	IN. W.C.	O.S.I.
1	1.73	36	62.28	1	.57	36	20.81
2	3.46	38	65.74	2	1.16	38	21.97
4	6.92	40	69.20	4	2.31	40	23.12
6	10.38	42	72.66	6	3.47	42	24.28
8	13.84	44	76.12	8	4.62	44	25.43
10	17.30	46	79.58	10	5.78	46	26.59
12	20.76	48	83.04	12	6.94	48	27.75
14	24.22	50	86.50	14	8.09	50	28.90
16	27.68	52	89.96	16	9.25	52	30.06
18	31.14	54	93.42	18	10.40	54	31.21
20	34.60	56	96.88	20	11.56	56	32.37
22	38.06	58	100.34	22	12.72	58	33.53
24	41.52	60	103.80	24	13.88	60	34.68
26	44.98	62	107.26	26	15.03	62	35.84
28	48.44	64	110.72	28	16.18	64	36.99
30	51.90	66	114.18	30	17.34	66	38.15
32	55.36	68	117.64	32	18.50	68	39.31
34	58.82	70	121.10	34	19.65	70	40.46

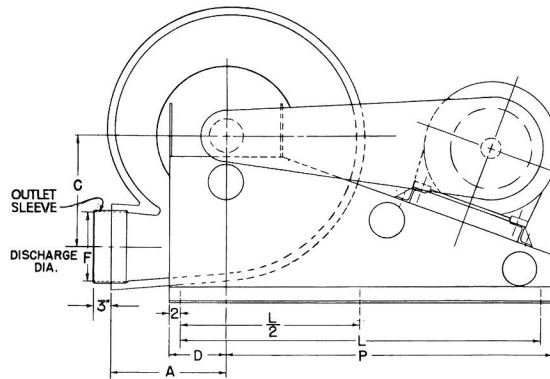
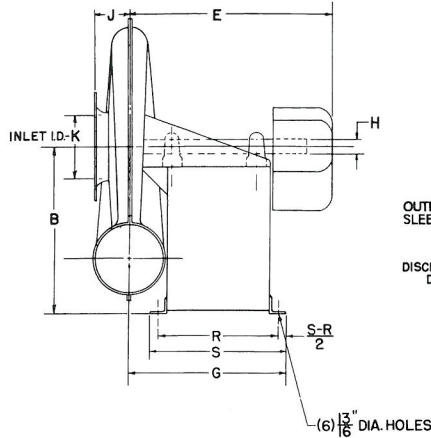
TABLE 3 TURBO BLOWER PERFORMANCE VACUUM RATING AT ATMOSPHERIC DISCHARGE



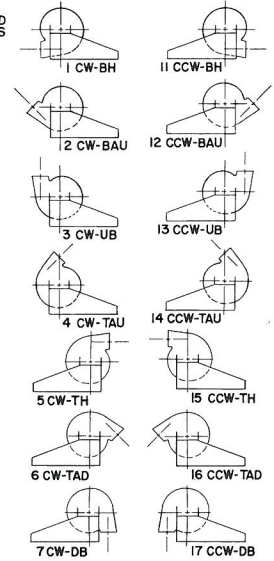
DIMENSIONS

ARRANGEMENT 9

CW-BH Shown — See Table this page for available mounting positions



AVAILABLE STANDARD DISCHARGE POSITIONS DRIVE END



DO NOT USE FOR CONSTRUCTION PURPOSES - CERTIFIED DIMENSIONS AVAILABLE AT TIME OF ORDER

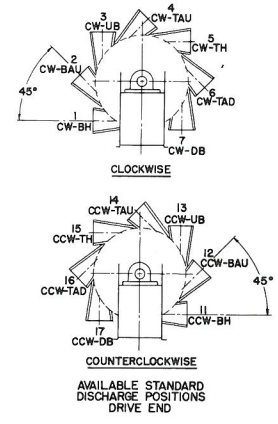
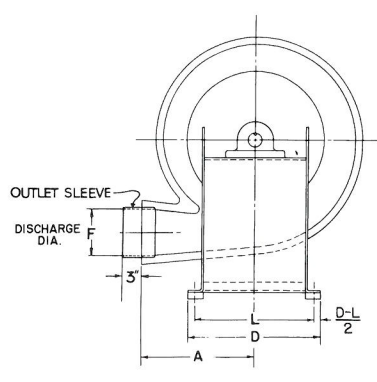
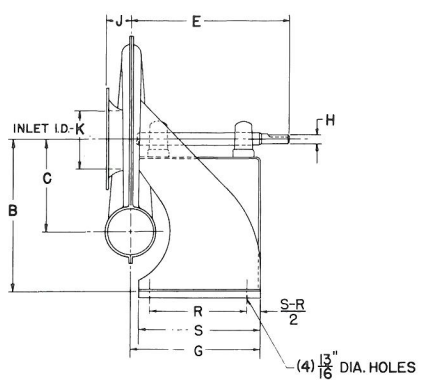
MODEL NUMBER TBAB 9-	SHAFT SIZE	A	B	C	D	E	F	G	H	J	K	L	P	R	S	KEYWAY	MINIMUM * SHEAVE DIA.													
010-010-A	1 3/16	12 7/8	13	15 1/4	9 1/4	22 3/4	4 1/4	19	1 3/16	3	8	49	43 3/4	14 13/16	17 1/16	1/4 x 1/4 x 5/8	3.0													
010-080-A		22 3/4					6 1/4											3 3/4	10											
020-030-A		17	13 3/8				19 1/8	1 1/2	3 3/4	10	49							43 3/4	14 13/16	17 1/16	3/8 x 3/8 x 2 1/2	3.4								
020-090-A		27 3/8	15 1/4				23 7/8	8 1/4	19 1/8	1 1/2	3 3/4							10	49	43 3/4	14 13/16	17 1/16	3/8 x 3/8 x 2 1/2	3.4						
030-040-A	18	27 3/8	16 3/8	9 1/4	30 1/8	12 1/4	23 7/8	10 1/4	1 1/2	4 7/8	12	51 1/2	46 1/4	19	21 1/4	1/2 x 1/2 x 2 5/8	5.6													
030-110-B	1 1/2	28 5/8																23 3/8	19 5/8	1 1/2	5 3/4	14	49	43 3/4	14 13/16	17 1/16	3/8 x 3/8 x 2 1/2	3.3		
040-060-A	1 7/16	29 1/4	29 11/16															23 9/16	1 1/2	4 7/8	12	51 1/2	46 1/4	19	21 1/4	1/2 x 1/2 x 2 5/8	5.6			
040-060-B	1 1/2	20 1/4	28 5/8															29 11/16	23 9/16	1 1/2	4 7/8	12	51 1/2	46 1/4	19	21 1/4	1/2 x 1/2 x 2 5/8	5.6		
040-130-C	1 11/16	20 1/2	28 5/8	17 1/4	9 1/4	30 1/8	12 1/4	23 7/8	1 1/2	5 3/4	14	51 1/2	46 1/4	19	21 1/4	1/2 x 1/2 x 2 5/8	5.6													
040-130-E	1 13/16		29 1/4															29 11/16	23 9/16	1 1/2	4 7/8	12	51 1/2	46 1/4	19	21 1/4	1/2 x 1/2 x 2 5/8	5.6		
050-070-B	1 1/2	20 1/2	27 3/8	17 1/4														9 1/4	30 1/8	12 1/4	23 7/8	1 1/2	5 3/4	14	51 1/2	46 1/4	19	21 1/4	1/2 x 1/2 x 2 5/8	5.6
050-070-C	1 11/16	28 5/8	29 1/4																											
050-150-E	1 13/16	20 1/2	29 1/4	29 11/16	23 9/16	1 1/2	4 7/8	12	51 1/2	46 1/4	19	21 1/4	1/2 x 1/2 x 2 5/8	5.6																
060-250-A	1 3/16	18	27 3/8	15 5/8	9 1/4	30 1/8	12 1/4	23 7/8	1 1/2	5 3/4	14	51 1/2	46 1/4	19	21 1/4	1/2 x 1/2 x 2 5/8	5.6													
060-250-B	1 1/2	27 3/8	15 5/8	22 3/4														6 1/4	19	1 3/16	3	10	49	43 3/4	14 13/16	17 1/16	3/8 x 3/8 x 2 1/2	3.3		
070-270-B	1 1/2	20	28 5/8	16 1/4														22 15/16	8 1/4	19 1/16	1 1/2	3 3/4	12	51 1/2	46 1/4	19	21 1/4	3/8 x 3/8 x 2 1/2	4.7	
070-270-C	1 11/16		29 1/4	29 11/16														23 9/16	1 1/2	4 7/8	12	51 1/2								46 1/4
071-271-E	1 15/16	22 3/4	29 1/4	18 1/4	9 1/4	30 1/8	12 1/4	23 7/8	1 1/2	5 3/4	14	51 1/2	46 1/4	19	21 1/4	1/2 x 1/2 x 2 5/8	5.6													
080-290-C	1 11/16		28 5/8															29 1/4	29 11/16	23 9/16	1 1/2	4 7/8	12	51 1/2	46 1/4	19	21 1/4	1/2 x 1/2 x 2 5/8	5.6	
080-290-E	1 11/16	22 3/4	29 3/4	18 1/4														29 5/8	23 3/8	1 1/2	4 3/8	12	51 1/2	46 1/4	19	21 1/4	1/2 x 1/2 x 2 5/8	5.6		
081-291-E	1 15/16	22 3/4	29 3/4	18 1/4														29 7/8	23 5/8	2 3/16	2 3/16								5	51 1/2
081-291-F	2 3/16	20 1/4	30 3/8	19	9 1/4	30 1/8	12 1/4	23 7/8	1 1/2	5 3/4	14	51 1/2	46 1/4	19	21 1/4	1/2 x 1/2 x 3 1/4	5.6													
090-310-E	1 15/16		29 3/4															29 13/16	23 9/16	1 1/2	4 7/8	12	51 1/2	46 1/4	19	21 1/4	1/2 x 1/2 x 2 5/8	5.6		
090-310-F	2 3/16	30 3/8	30 3/8	19														29 13/16	23 9/16	2 3/16	2 3/16	5	51 1/2	46 1/4	19	21 1/4	1/2 x 1/2 x 3 1/4	5.6		
091-311-G	2 7/16	30 1/8	30 1/8	19														33 3/4	28	2 7/16	2 1/2	5	51 1/2	46 1/4	19	21 1/4	5/8 x 5/8 x 2 3/4	5.6		
091-311-J	2 11/16	20 1/4	30 9/16	19	9 1/4	30 1/8	12 1/4	23 7/8	1 1/2	5 3/4	14	51 1/2	46 1/4	19	21 1/4	5/8 x 5/8 x 2 1/16	5.6													
100-330-G	2 7/16		30 1/8															33 3/4	28	2 7/16	2 1/2	6 1/8	14	51 1/2	46 1/4	19	21 1/4	5/8 x 5/8 x 2 3/4	5.6	
100-330-H 8 J	2 1/16	30 9/16	19 7/8	34														12	2 1/2	6 1/8	14	51 1/2	46 1/4	19	21 1/4	5/8 x 5/8 x 2 1/16	5.6			
101-321-J		30 9/16	19 7/8	28 1/4														12	2 1/2	6 1/8	14	51 1/2	46 1/4	19	21 1/4	5/8 x 5/8 x 2 1/16	5.6			
061-251-E	1 15/16	18	29 3/4	15 5/8	9 1/4	28 1/4	6 1/4	23 1/4	1 15/16	3	10	51 1/2	46 1/4	19	21 1/4	1/2 x 1/2 x 2 5/8	5.6													

* = CAUTION - MINIMUM SHEAVE SHOWN REFERS TO BLOWER MINIMUM SHEAVE PITCH DIA. DO NOT USE SHEAVES OF LESS DIA. THAN SHOWN.



DIMENSIONS

ARRANGEMENT 1



DO NOT USE FOR CONSTRUCTION PURPOSES - CERTIFIED DIMENSIONS AVAILABLE AT TIME OF ORDER

MODEL NUMBER TBABI-	SHAFT SIZE	A	B	C	D	E	F	G	H	J	K	L	R	S	KEYWAY	MINIMUM * SHEAVE DIA.															
010-010-A	1 3/16	12 7/8	24	13	23 1/2	18 11/16	4 1/4	16 1/4	1 3/16	3	8	11	15	15	1/4 x 1/4 x 5/8	3.0															
010-080-A																															
020-030-A		17		13 3/8			6 1/4																								
020-090-A		18		15 1/4			8 1/4										3 3/4	10													
030-040-A		18		15 1/4			8 1/4										3 3/4	10													
030-110-B	1 1/2					19 7/8	8 1/4		1 1/2	3 3/4	10				3/8 x 3/8 x 2 1/2	3.4															
040-060-A	1 3/16	20 1/4	28 5/16	16 3/8	23 1/2	19 7/8	10 1/4	16 5/8	1 3/16	4 7/8	12	19	24	24	1/4 x 1/4 x 1 5/8	3.0															
040-060-B	1 1/2																										3/8 x 3/8 x 2 1/2	3.4			
040-130-C	1 11/16																											1/2 x 1/2 x 2 5/8	4.7		
040-130-E	1 15/16																											1/2 x 1/2 x 2 5/8	5.6		
050-070-B	1 1/2																											3/8 x 3/8 x 2 1/2	3.3		
050-070-C	1 11/16	20 1/2	28 5/16	17 1/4		20 7/16	12 1/4	16 7/8	1 1/2	5 3/4	14	21	19	24	3/8 x 3/8 x 2 1/2	4.7															
050-150-E	1 15/16					24 9/16		25 7/8	1 11/16						1/2 x 1/2 x 2 5/8	5.6															
060-250-A	1 3/16	18	24	15 5/8	23 1/2	18 11/16	6 1/4	16 1/4	1 3/16	3	10	11	15	15	1/4 x 1/4 x 5/8	3.0															
060-250-B	1 1/2																														
070-270-B	1 1/2																														
070-270-C	1 11/16																20	28 5/16	16 1/4		19 7/8	8 1/4	25 1/4	1 11/16	3 3/4						
071-271-E	1 13/16																				24 13/16			1 15/16							
080-290-C	1 11/16	22 3/4	29 1/8	18 1/4	23 1/2	24 13/16		25 3/8	1 11/16	4 3/8	12	19	24	24	1/2 x 1/2 x 2 5/8	5.6															
080-290-E																															
081-291-E	1 15/16																			24 13/16		25 3/8	1 15/16	4 3/8							
081-291-F	2 3/16																			24 13/16		25 3/8	2 3/16								
090-310-E	1 15/16																			24 13/16		25 3/8	1 15/16								
090-310-F	2 3/16					24 13/16	10 1/4		2 3/16																						
091-311-G	2 7/16	20 1/4	30 1/8	19	23 1/2	29		25 5/8	2 7/16	5	14	19	24	24	1/2 x 1/2 x 3 1/4	5.6															
091-311-J	2 11/16																														
100-330-G	2 7/16		30 1/8	19 7/8	25	29 3/16		25 5/8	2 7/16	6 1/8	14	22 1/2			5/8 x 5/8 x 2 3/4																
100-330-H & J	2 1/16		30 9/16	19 7/8	25	28 5/8	12 1/4	25 7/8	2 1/2																						
101-321-J									28 13/16									5/8 x 5/8 x 2 1/16													
061-251-E	1 15/16	18	29 1/8	15 5/8	23 1/2	25 1/2	6 1/4	26	1 15/16	3	10	21			1/2 x 1/2 x 2 5/8																

* = CAUTION - MINIMUM SHEAVE SHOWN REFERS TO BLOWER MINIMUM SHEAVE PITCH DIA. DO NOT USE SHEAVES OF LESS DIA. THAN SHOWN.

CAPACITIES

SIZE
TBAB 010-010-A

Impeller Dia. — 18 3/8 in.
Tip Speed (FPM) — 4.81 x RPM
Inlet Dia. — 8 in.
Area — .3491 sq. ft.
Outlet Dia. — 4 in.
Area — .0873 sq. ft.

All capacities based on air
density of .0749 lbs./cu. ft.

MHP includes all drive losses

CFM	OV FT/MIN	13" TP		14" TP		15" TP		16" TP		17" TP		18" TP	
		RPM	MHP	RPM	MHP	RPM	MHP	RPM	MHP	RPM	MHP	RPM	MHP
91.	1043.	2754.	0.7	2861.	0.8	2964.	0.9	3063.	1.0	3160.	1.0	3255.	1.1
101.	1155.	2748.	0.7	2854.	0.8	2956.	0.9	3056.	1.0	3152.	1.1	3246.	1.1
111.	1266.	2743.	0.7	2848.	0.8	2950.	0.9	3049.	1.0	3145.	1.1	3239.	1.2
120.	1378.	2739.	0.7	2844.	0.8	2945.	0.9	3043.	1.0	3139.	1.1	3232.	1.2
130.	1490.	2737.	0.8	2841.	0.8	2941.	0.9	3039.	1.0	3134.	1.1	3226.	1.2
140.	1602.	2737.	0.8	2840.	0.9	2939.	0.9	3036.	1.0	3130.	1.1	3222.	1.2
150.	1713.	2738.	0.8	2840.	0.9	2939.	1.0	3035.	1.0	3128.	1.1	3219.	1.2
159.	1825.	2741.	0.8	2842.	0.9	2940.	1.0	3035.	1.1	3128.	1.2	3218.	1.2
169.	1937.	2747.	0.8	2846.	0.9	2943.	1.0	3037.	1.1	3129.	1.2	3218.	1.3
179.	2049.	2753.	0.9	2852.	1.0	2948.	1.0	3041.	1.1	3131.	1.2	3220.	1.3
189.	2160.	2762.	0.9	2859.	1.0	2954.	1.1	3046.	1.2	3136.	1.2	3223.	1.3
198.	2272.	2772.	0.9	2868.	1.0	2962.	1.1	3053.	1.2	3141.	1.3	3228.	1.4
208.	2384.	2783.	1.0	2878.	1.1	2971.	1.1	3061.	1.2	3149.	1.3	3235.	1.4
218.	2496.	2796.	1.0	2890.	1.1	2982.	1.2	3071.	1.3	3158.	1.4	3243.	1.4
228.	2607.	2810.	1.0	2903.	1.1	2994.	1.2	3082.	1.3	3168.	1.4	3252.	1.5
237.	2719.	2825.	1.1	2917.	1.2	3007.	1.3	3094.	1.4	3179.	1.4	3263.	1.5
247.	2831.	2841.	1.1	2932.	1.2	3021.	1.3	3108.	1.4	3192.	1.5	3275.	1.6
257.	2943.	2858.	1.2	2949.	1.3	3037.	1.4	3122.	1.5	3206.	1.5	3288.	1.6
267.	3054.	2875.	1.2	2966.	1.3	3053.	1.4	3138.	1.5	3222.	1.6	3303.	1.7
276.	3166.	2894.	1.3	2983.	1.4	3070.	1.5	3155.	1.6	3238.	1.7	3318.	1.8
286.	3278.	2912.	1.3	3001.	1.4	3089.	1.5	3174.	1.6	3255.	1.7	3335.	1.8
296.	3390.	2931.	1.4	3020.	1.5	3108.	1.6	3192.	1.7	3273.	1.8	3352.	1.9

CFM	OV FT/MIN	19" TP		20" TP		21" TP		22" TP		23" TP		24" TP	
		RPM	MHP	RPM	MHP	RPM	MHP	RPM	MHP	RPM	MHP	RPM	MHP
91.	1043.	3347.	1.2	3436.	1.3	3524.	1.4	3610.	1.5	3694.	1.6		
101.	1155.	3338.	1.2	3427.	1.3	3514.	1.4	3600.	1.5	3683.	1.6		
111.	1266.	3330.	1.2	3418.	1.3	3505.	1.4	3590.	1.5	3674.	1.6		
120.	1378.	3322.	1.3	3411.	1.4	3497.	1.5	3582.	1.6	3665.	1.7		
130.	1490.	3316.	1.3	3404.	1.4	3490.	1.5	3574.	1.6	3657.	1.7		
140.	1602.	3312.	1.3	3399.	1.4	3484.	1.5	3568.	1.6	3650.	1.7		
150.	1713.	3308.	1.3	3395.	1.4	3480.	1.5	3563.	1.6	3644.	1.7		
159.	1825.	3306.	1.3	3392.	1.4	3476.	1.5	3559.	1.6	3640.	1.7		
169.	1937.	3306.	1.4	3391.	1.5	3474.	1.6	3556.	1.7	3637.	1.8		
179.	2049.	3307.	1.4	3391.	1.5	3474.	1.6	3555.	1.7	3635.	1.8		
189.	2160.	3309.	1.4	3393.	1.5	3475.	1.6	3556.	1.7	3635.	1.8		
198.	2272.	3313.	1.5	3396.	1.6	3478.	1.7	3558.	1.8	3636.	1.9		
208.	2384.	3319.	1.5	3401.	1.6	3482.	1.7	3561.	1.8	3638.	1.9		
218.	2496.	3326.	1.5	3407.	1.6	3487.	1.7	3565.	1.8	3642.	1.9		
228.	2607.	3334.	1.6	3415.	1.7	3494.	1.8	3572.	1.9	3648.	2.0		
237.	2719.	3345.	1.6	3424.	1.7	3502.	1.8	3579.	1.9	3655.	2.0		
247.	2831.	3356.	1.7	3435.	1.8	3512.	1.9	3588.	2.0	3663.	2.1		
257.	2943.	3368.	1.7	3446.	1.8	3523.	1.9	3598.	2.0	3672.	2.2		
267.	3054.	3382.	1.8	3459.	1.9	3536.	2.0	3609.	2.1	3683.	2.2		
276.	3166.	3397.	1.9	3473.	2.0	3547.	2.1	3622.	2.2	3695.	2.3		
286.	3278.	3412.	1.9	3487.	2.0	3561.	2.1	3635.	2.2	3707.	2.3		
296.	3390.	3428.	2.0	3502.	2.1	3576.	2.2	3649.	2.3				



Impeller Dia. — 20 3/4 in.
 Tip Speed (FPM) — 5.43 x RPM
 Inlet Dia. — 8 in.
 Area — .3491 sq. ft.
 Outlet Dia. — 4 in.
 Area — .0873 sq. ft.

SIZE
 TBAB 010-080-A

All capacities based on air
 density of .0749 lbs./cu. ft.

MHP includes all drive losses

CFM	OV FT/MIN	19" TP		20" TP		21" TP		22" TP		23" TP		24" TP	
		RPM	MHP	RPM	MHP	RPM	MHP	RPM	MHP	RPM	MHP	RPM	MHP
194.	2223.	2778.	1.3	2851.	1.4	2922.	1.5	2992.	1.6	3060.	1.7	3127.	1.8
209.	2390.	2775.	1.4	2847.	1.5	2918.	1.6	2987.	1.7	3055.	1.8	3122.	1.9
223.	2557.	2773.	1.4	2845.	1.5	2915.	1.6	2984.	1.7	3051.	1.8	3117.	1.9
238.	2724.	2773.	1.5	2844.	1.6	2913.	1.7	2982.	1.8	3048.	1.9	3114.	2.0
252.	2891.	2775.	1.5	2845.	1.6	2914.	1.7	2981.	1.8	3047.	1.9	3112.	2.0
267.	3057.	2778.	1.6	2848.	1.7	2916.	1.8	2982.	1.9	3048.	2.0	3112.	2.1
281.	3224.	2785.	1.6	2853.	1.7	2920.	1.8	2986.	1.9	3050.	2.1	3114.	2.2
296.	3391.	2793.	1.7	2860.	1.8	2926.	1.9	2991.	2.0	3055.	2.1	3117.	2.2
310.	3558.	2804.	1.8	2870.	1.9	2935.	2.0	2998.	2.1	3061.	2.2	3123.	2.3
325.	3724.	2817.	1.8	2882.	1.9	2945.	2.1	3008.	2.2	3070.	2.3	3130.	2.4
339.	3891.	2833.	1.9	2896.	2.0	2958.	2.1	3020.	2.2	3080.	2.3	3140.	2.5
354.	4058.	2851.	2.0	2913.	2.1	2974.	2.2	3034.	2.3	3093.	2.4	3152.	2.5
369.	4225.	2872.	2.1	2932.	2.2	2992.	2.3	3050.	2.4	3109.	2.5	3167.	2.6
383.	4391.	2895.	2.2	2954.	2.3	3013.	2.4	3071.	2.5	3128.	2.6	3184.	2.7
398.	4558.	2923.	2.3	2981.	2.4	3038.	2.5	3094.	2.6	3150.	2.7	3204.	2.9
412.	4725.	2948.	2.4	3004.	2.5	3059.	2.6	3113.	2.7	3168.	2.8	3227.	3.0
427.	4892.	2978.	2.5	3032.	2.6	3086.	2.7	3139.	2.8	3192.	2.9	3244.	3.1
441.	5058.	3011.	2.6	3063.	2.7	3115.	2.8	3167.	2.9	3218.	3.1	3269.	3.2
456.	5225.	3048.	2.7	3098.	2.8	3147.	3.0	3197.	3.1	3247.	3.2	3296.	3.3
470.	5392.	3088.	2.9	3135.	3.0	3182.	3.1	3230.	3.2	3278.	3.3	3325.	3.4
485.	5559.	3119.	3.0	3166.	3.1	3220.	3.2	3265.	3.4	3311.	3.5	3356.	3.6

CFM	OV FT/MIN	25" TP		26" TP		27" TP		28" TP		29" TP		30" TP	
		RPM	MHP	RPM	MHP	RPM	MHP	RPM	MHP	RPM	MHP	RPM	MHP
194.	2223.	3192.	1.9	3257.	2.0	3320.	2.1	3382.	2.2	3442.	2.3	3503.	2.4
209.	2390.	3187.	2.0	3251.	2.1	3314.	2.2	3375.	2.3	3436.	2.4	3496.	2.5
223.	2557.	3182.	2.0	3246.	2.1	3308.	2.2	3370.	2.3	3430.	2.4	3489.	2.5
238.	2724.	3178.	2.1	3242.	2.2	3304.	2.3	3365.	2.4	3425.	2.5	3484.	2.6
252.	2891.	3176.	2.1	3239.	2.2	3301.	2.3	3361.	2.5	3421.	2.6	3480.	2.7
267.	3057.	3175.	2.2	3238.	2.3	3299.	2.4	3359.	2.5	3418.	2.6	3476.	2.7
281.	3224.	3176.	2.3	3238.	2.4	3298.	2.5	3358.	2.6	3417.	2.7	3475.	2.8
296.	3391.	3179.	2.3	3240.	2.4	3300.	2.6	3359.	2.7	3417.	2.8	3474.	2.9
310.	3558.	3184.	2.4	3244.	2.5	3303.	2.6	3361.	2.7	3419.	2.9	3475.	3.0
325.	3724.	3190.	2.5	3249.	2.6	3308.	2.7	3366.	2.8	3422.	2.9	3478.	3.1
339.	3891.	3199.	2.6	3257.	2.7	3315.	2.8	3372.	2.9	3428.	3.0	3483.	3.2
354.	4058.	3210.	2.7	3268.	2.8	3324.	2.9	3380.	3.0	3435.	3.1	3489.	3.2
369.	4225.	3224.	2.8	3280.	2.9	3335.	3.0	3390.	3.1	3446.	3.2	3498.	3.3
383.	4391.	3240.	2.9	3295.	3.0	3349.	3.1	3402.	3.2	3458.	3.4	3508.	3.4
398.	4558.	3258.	3.0	3311.	3.1	3364.	3.2	3416.	3.3	3469.	3.4	3521.	3.6
412.	4725.	3279.	3.1	3330.	3.2	3381.	3.3	3433.	3.4	3484.	3.5	3535.	3.7
427.	4892.	3302.	3.2	3351.	3.3	3400.	3.4	3455.	3.6	3501.	3.7	3552.	3.8
441.	5058.	3326.	3.3	3374.	3.4	3421.	3.5	3471.	3.7	3521.	3.8	3571.	3.9
456.	5225.	3352.	3.5	3397.	3.6	3449.	3.7	3494.	3.8	3544.	3.9	3593.	4.1
470.	5392.	3379.	3.6	3421.	3.7	3470.	3.8	3520.	3.9	3569.	4.1	3617.	4.2
485.	5559.	3405.	3.7	3458.	3.9	3500.	4.0	3549.	4.1	3597.	4.2	3636.	4.3

Impeller Dia. — 19 in.
 Tip Speed (FPM) — 4.97 x RPM
 Inlet Dia. — 8 in.
 Area — .3491 sq. ft.
 Outlet Dia. — 6 in.
 Area — .1963 sq. ft.

SIZE
 TBAB 020-030-A

All capacities based on air
 density of .0749 lbs./cu. ft.

MHP includes all drive losses

CFM	OV FT/MIN	13" TP		14" TP		15" TP		16" TP		17" TP		18" TP	
		RPM	MHP	RPM	MHP	RPM	MHP	RPM	MHP	RPM	MHP	RPM	MHP
241.	1225.	2553.	1.0	2646.	1.1	2735.	1.2	2822.	1.3	2906.	1.4	2988.	1.6
260.	1324.	2561.	1.1	2653.	1.2	2742.	1.3	2828.	1.4	2912.	1.5	2993.	1.6
280.	1424.	2570.	1.1	2661.	1.2	2749.	1.4	2835.	1.5	2918.	1.6	2999.	1.7
299.	1523.	2580.	1.2	2670.	1.3	2758.	1.4	2843.	1.5	2926.	1.6	3006.	1.8
319.	1622.	2591.	1.3	2681.	1.4	2768.	1.5	2853.	1.6	2935.	1.7	3015.	1.8
338.	1722.	2603.	1.3	2693.	1.4	2779.	1.5	2863.	1.7	2945.	1.8	3024.	1.9
358.	1821.	2617.	1.4	2706.	1.5	2791.	1.6	2875.	1.7	2956.	1.8	3035.	2.0
377.	1920.	2631.	1.4	2719.	1.6	2805.	1.7	2887.	1.8	2968.	1.9	3046.	2.0
397.	2020.	2647.	1.5	2734.	1.6	2819.	1.7	2901.	1.9	2981.	2.0	3059.	2.1
416.	2119.	2663.	1.6	2749.	1.7	2834.	1.8	2915.	1.9	2995.	2.1	3072.	2.2
436.	2218.	2680.	1.6	2766.	1.8	2849.	1.9	2930.	2.0	3009.	2.2	3086.	2.3
455.	2318.	2697.	1.7	2783.	1.8	2866.	2.0	2946.	2.1	3025.	2.2	3101.	2.4
475.	2417.	2716.	1.8	2800.	1.9	2883.	2.1	2963.	2.2	3041.	2.3	3118.	2.5
494.	2516.	2735.	1.9	2819.	2.0	2901.	2.1	2980.	2.3	3059.	2.4	3135.	2.6
514.	2616.	2755.	1.9	2838.	2.1	2920.	2.2	2999.	2.4	3077.	2.5	3153.	2.7
533.	2715.	2775.	2.0	2858.	2.2	2939.	2.3	3019.	2.5	3096.	2.6	3171.	2.8
553.	2814.	2796.	2.1	2878.	2.3	2960.	2.4	3040.	2.6	3116.	2.7	3190.	2.9
572.	2914.	2817.	2.2	2901.	2.4	2983.	2.5	3061.	2.7	3137.	2.9	3210.	3.0
592.	3013.	2840.	2.3	2925.	2.5	3006.	2.6	3076.	2.8	3151.	2.9	3230.	3.1
611.	3112.	2866.	2.4	2942.	2.5	3021.	2.7	3097.	2.9	3172.	3.0	3245.	3.2
631.	3212.	2884.	2.5	2964.	2.7	3043.	2.8	3119.	3.0	3193.	3.2	3265.	3.3
650.	3311.	2907.	2.6	2987.	2.8	3065.	2.9	3140.	3.1	3214.	3.3	3286.	3.4

CFM	OV FT/MIN	19" TP		20" TP		21" TP		22" TP		23" TP		24" TP	
		RPM	MHP	RPM	MHP	RPM	MHP	RPM	MHP	RPM	MHP	RPM	MHP
241.	1225.	3068.	1.7	3146.	1.8	3222.	1.9	3297.	2.0	3370.	2.1	3441.	2.2
260.	1324.	3073.	1.7	3150.	1.8	3226.	2.0	3300.	2.1	3372.	2.2	3443.	2.3
280.	1424.	3078.	1.8	3155.	1.9	3230.	2.0	3304.	2.1	3376.	2.3	3447.	2.4
299.	1523.	3085.	1.9	3161.	2.0	3236.	2.1	3309.	2.2	3381.	2.4	3452.	2.5
319.	1622.	3093.	1.9	3169.	2.1	3243.	2.2	3316.	2.3	3387.	2.4	3458.	2.6
338.	1722.	3102.	2.0	3177.	2.1	3251.	2.3	3324.	2.4	3394.	2.5	3464.	2.7
358.	1821.	3112.	2.1	3187.	2.2	3260.	2.4	3332.	2.5	3403.	2.6	3471.	2.7
377.	1920.	3123.	2.2	3197.	2.3	3271.	2.4	3342.	2.6	3412.	2.7	3480.	2.8
397.	2020.	3135.	2.3	3209.	2.4	3282.	2.5	3353.	2.7	3422.	2.8	3490.	2.9
416.	2119.	3147.	2.3	3221.	2.5	3294.	2.6	3364.	2.8	3434.	2.9	3501.	3.0
436.	2218.	3161.	2.4	3235.	2.6	3307.	2.7	3376.	2.9	3447.	3.0	3512.	3.1
455.	2318.	3176.	2.5	3249.	2.7	3320.	2.8	3390.	3.0	3458.	3.1	3525.	3.3
475.	2417.	3192.	2.6	3264.	2.8	3335.	2.9	3403.	3.1	3471.	3.2	3538.	3.4
494.	2516.	3209.	2.7	3280.	2.9	3350.	3.0	3418.	3.2	3485.	3.3	3552.	3.5
514.	2616.	3226.	2.8	3297.	3.0	3366.	3.1	3434.	3.3	3501.	3.4	3567.	3.6
533.	2715.	3243.	2.9	3314.	3.1	3382.	3.2	3453.	3.4	3516.	3.6	3582.	3.7
553.	2814.	3262.	3.0	3331.	3.2	3399.	3.4	3466.	3.5	3533.	3.7	3598.	3.8
572.	2914.	3281.	3.2	3349.	3.3	3416.	3.5	3483.	3.6	3550.	3.8	3615.	4.0
592.	3013.	3300.	3.3	3368.	3.4	3436.	3.6	3502.	3.8	3568.	3.9	3633.	4.1
611.	3112.	3320.	3.4	3387.	3.5	3458.	3.7	3520.	3.9	3586.	4.1	3651.	4.2
631.	3212.	3340.	3.5	3405.	3.7	3472.	3.8	3540.	4.0	3606.	4.2	3671.	4.4
650.	3311.	3360.	3.6	3424.	3.8	3493.	4.0	3560.	4.2	3626.	4.3	3691.	4.5



Impeller Dia. — 21 1/8 in.
 Tip Speed (FPM) — 5.53 x RPM
 Inlet Dia. — 8 in.
 Area — .3491 sq. ft.
 Outlet Dia. — 6 in.
 Area — .1963 sq. ft.

SIZE
 TBAB 020-090-A

All capacities based on air
 density of .0749 lbs./cu. ft.

MHP includes all drive losses

CFM	OV FT/MIN	19" TP		20" TP		21" TP		22" TP		23" TP		24" TP	
		RPM	MHP	RPM	MHP	RPM	MHP	RPM	MHP	RPM	MHP	RPM	MHP
380.	1936.	2857.	2.1	2929.	2.3	2999.	2.4	3068.	2.5	3135.	2.7	3201.	2.8
409.	2081.	2863.	2.2	2934.	2.4	3004.	2.5	3072.	2.7	3139.	2.8	3204.	2.9
437.	2226.	2870.	2.4	2941.	2.5	3010.	2.6	3078.	2.8	3144.	2.9	3209.	3.1
466.	2371.	2879.	2.5	2949.	2.6	3018.	2.8	3085.	2.9	3150.	3.1	3215.	3.2
494.	2516.	2889.	2.6	2959.	2.7	3027.	2.9	3093.	3.0	3158.	3.2	3222.	3.3
523.	2662.	2901.	2.7	2970.	2.9	3037.	3.0	3103.	3.2	3168.	3.3	3231.	3.5
551.	2807.	2913.	2.8	2982.	3.0	3049.	3.1	3114.	3.3	3178.	3.5	3241.	3.6
580.	2952.	2927.	3.0	2995.	3.1	3061.	3.3	3126.	3.5	3190.	3.6	3252.	3.8
608.	3097.	2941.	3.1	3009.	3.3	3075.	3.4	3139.	3.6	3203.	3.8	3265.	3.9
637.	3242.	2956.	3.2	3023.	3.4	3089.	3.6	3153.	3.8	3216.	3.9	3278.	4.1
665.	3387.	2972.	3.4	3039.	3.6	3104.	3.7	3168.	3.9	3231.	4.1	3292.	4.3
694.	3533.	2987.	3.5	3054.	3.7	3119.	3.9	3183.	4.1	3246.	4.3	3307.	4.5
722.	3678.	3003.	3.7	3070.	3.8	3135.	4.0	3199.	4.2	3262.	4.4	3323.	4.6
751.	3823.	3019.	3.8	3086.	4.0	3151.	4.2	3216.	4.4	3278.	4.6	3339.	4.8
779.	3968.	3034.	3.9	3101.	4.1	3168.	4.4	3232.	4.6	3294.	4.8	3355.	5.0
808.	4113.	3049.	4.1	3117.	4.3	3184.	4.5	3248.	4.7	3310.	5.0	3371.	5.2
836.	4259.	3063.	4.2	3132.	4.5	3199.	4.7	3264.	4.9	3326.	5.1	3387.	5.4
865.	4404.	3076.	4.4	3146.	4.6	3213.	4.8	3279.	5.1	3341.	5.3	3402.	5.5
893.	4549.	3087.	4.5	3158.	4.7	3227.	5.0	3292.	5.2	3356.	5.5	3417.	5.7
922.	4694.	3097.	4.6	3169.	4.9	3239.	5.1	3305.	5.4	3369.	5.6	3431.	5.9
950.	4839.	3104.	4.7	3178.	5.0	3249.	5.3	3317.	5.5	3382.	5.8	3444.	6.1

CFM	OV FT/MIN	25" TP		26" TP		27" TP		28" TP		29" TP		30" TP	
		RPM	MHP	RPM	MHP	RPM	MHP	RPM	MHP	RPM	MHP	RPM	MHP
380.	1936.	3265.	3.0	3329.	3.1	3391.	3.2	3452.	3.4	3512.	3.5	3571.	3.7
409.	2081.	3268.	3.1	3331.	3.2	3393.	3.4	3454.	3.5	3513.	3.7	3572.	3.8
437.	2226.	3272.	3.2	3335.	3.4	3396.	3.5	3456.	3.7	3516.	3.8	3574.	4.0
466.	2371.	3278.	3.4	3340.	3.5	3401.	3.7	3461.	3.8	3520.	4.0	3578.	4.1
494.	2516.	3285.	3.5	3347.	3.7	3407.	3.8	3466.	4.0	3525.	4.1	3582.	4.3
523.	2662.	3293.	3.6	3354.	3.8	3414.	4.0	3474.	4.1	3532.	4.3	3589.	4.5
551.	2807.	3303.	3.8	3364.	4.0	3423.	4.1	3482.	4.3	3540.	4.5	3596.	4.6
580.	2952.	3314.	4.0	3374.	4.1	3433.	4.3	3491.	4.5	3549.	4.7	3605.	4.8
608.	3097.	3326.	4.1	3386.	4.3	3444.	4.5	3502.	4.7	3560.	4.9	3615.	5.0
637.	3242.	3339.	4.3	3398.	4.5	3456.	4.7	3514.	4.8	3570.	5.0	3626.	5.2
665.	3387.	3353.	4.5	3412.	4.7	3469.	4.8	3526.	5.0	3582.	5.2	3637.	5.4
694.	3533.	3367.	4.6	3426.	4.8	3483.	5.0	3540.	5.2	3595.	5.4	3650.	5.6
722.	3678.	3382.	4.8	3441.	5.0	3497.	5.2	3556.	5.4	3609.	5.6	3664.	5.8
751.	3823.	3398.	5.0	3456.	5.2	3512.	5.4	3568.	5.6	3624.	5.8	3678.	6.0
779.	3968.	3414.	5.2	3471.	5.4	3527.	5.6	3583.	5.8	3639.	6.0	3693.	6.2
808.	4113.	3430.	5.4	3487.	5.6	3544.	5.8	3599.	6.0	3654.	6.2	3708.	6.4
836.	4259.	3445.	5.6	3502.	5.8	3562.	6.0	3615.	6.2	3670.	6.4		
865.	4404.	3461.	5.8	3518.	6.0	3575.	6.2	3631.	6.4	3686.	6.7		
893.	4549.	3476.	5.9	3533.	6.2	3590.	6.4	3647.	6.6	3702.	6.9		
922.	4694.	3490.	6.1	3550.	6.4	3606.	6.6	3662.	6.8				
950.	4839.	3504.	6.3	3567.	6.6	3621.	6.8	3678.	7.1				

Impeller Dia. — 17 1/2 in.
 Tip Speed (FPM) — 4.58 x RPM
 Inlet Dia. — 10 in.
 Area — .5454 sq. ft.
 Outlet Dia. — 8 in.
 Area — .3491 sq. ft.

SIZE
 TBAB 030-040-A

All capacities based on air
 density of .0749 lbs./cu. ft.

MHP includes all drive losses

CFM	OV FT/MIN	13" TP		14" TP		15" TP		16" TP		17" TP		18" TP	
		RPM	MHP	RPM	MHP	RPM	MHP	RPM	MHP	RPM	MHP	RPM	MHP
500.	1431.	2675.	1.6	2778.	1.8								
540.	1547.	2673.	1.7	2773.	1.9	2871.	2.0	2967.	2.2	3060.	2.4		
581.	1663.	2675.	1.8	2773.	2.0	2869.	2.1	2963.	2.3	3054.	2.5		
621.	1779.	2681.	1.9	2777.	2.1	2871.	2.2	2962.	2.4	3052.	2.6	3140.	2.8
662.	1895.	2691.	2.0	2785.	2.2	2876.	2.3	2966.	2.5	3054.	2.7	3140.	2.9
702.	2011.	2704.	2.1	2796.	2.3	2886.	2.5	2974.	2.6	3060.	2.8	3144.	3.0
743.	2128.	2720.	2.2	2810.	2.4	2899.	2.6	2985.	2.8	3069.	3.0	3151.	3.1
783.	2244.	2739.	2.4	2828.	2.6	2914.	2.7	2999.	2.9	3081.	3.1	3162.	3.3
824.	2360.	2760.	2.5	2847.	2.7	2932.	2.9	3015.	3.1	3096.	3.3	3176.	3.4
864.	2476.	2782.	2.7	2868.	2.8	2952.	3.0	3034.	3.2	3114.	3.4	3192.	3.6
905.	2592.	2805.	2.8	2891.	3.0	2974.	3.2	3054.	3.4	3133.	3.6	3211.	3.8
945.	2708.	2829.	2.9	2914.	3.1	2996.	3.4	3076.	3.6	3156.	3.8	3232.	4.0
986.	2824.	2853.	3.1	2938.	3.3	3021.	3.5	3102.	3.7	3180.	4.0	3255.	4.2
1026.	2940.	2877.	3.2	2963.	3.5	3047.	3.7	3128.	3.9	3205.	4.2	3280.	4.4
1067.	3056.	2900.	3.4	2989.	3.6	3073.	3.9	3147.	4.1	3223.	4.3	3298.	4.6
1107.	3172.	2922.	3.5	3013.	3.8	3091.	4.0	3171.	4.3	3248.	4.5	3322.	4.8
1148.	3288.	2941.	3.7	3035.	4.0	3114.	4.2	3194.	4.5	3272.	4.7	3346.	5.0
1188.	3404.	2957.	3.8	3054.	4.1	3135.	4.4	3217.	4.6	3295.	4.9	3370.	5.2
1229.	3520.	2967.	3.9	3068.	4.3	3154.	4.5	3238.	4.8	3317.	5.1	3393.	5.4
1269.	3636.	2971.	4.0	3078.	4.4	3170.	4.7	3257.	5.0	3338.	5.3	3421.	5.6
1310.	3752.	2964.	4.1	3082.	4.5	3185.	4.9	3273.	5.2	3362.	5.5	3440.	5.8
1350.	3868.	2936.	4.0	3078.	4.5	3189.	4.9	3288.	5.3	3376.	5.7	3457.	6.0

CFM	OV FT/MIN	19" TP		20" TP		21" TP		22" TP		23" TP		24" TP	
		RPM	MHP	RPM	MHP	RPM	MHP	RPM	MHP	RPM	MHP	RPM	MHP
500.	1431.												
540.	1547.												
581.	1663.												
621.	1779.												
662.	1895.	3224.	3.1	3307.	3.2	3388.	3.4						
702.	2011.	3227.	3.2	3308.	3.4	3388.	3.6	3466.	3.8	3543.	4.0		
743.	2128.	3233.	3.3	3312.	3.5	3390.	3.7	3467.	3.9	3543.	4.1	3618.	4.3
783.	2244.	3242.	3.5	3320.	3.7	3397.	3.9	3472.	4.1	3547.	4.3	3620.	4.5
824.	2360.	3254.	3.6	3331.	3.8	3406.	4.0	3480.	4.2	3554.	4.5	3625.	4.7
864.	2476.	3269.	3.8	3345.	4.0	3419.	4.2	3491.	4.4	3565.	4.7	3633.	4.8
905.	2592.	3287.	4.0	3361.	4.2	3434.	4.4	3505.	4.6	3575.	4.8	3645.	5.0
945.	2708.	3307.	4.2	3380.	4.4	3451.	4.6	3520.	4.8	3590.	5.0	3658.	5.3
986.	2824.	3329.	4.4	3400.	4.6	3470.	4.8	3538.	5.0	3607.	5.2	3674.	5.5
1026.	2940.	3352.	4.6	3422.	4.8	3490.	5.0	3561.	5.3	3625.	5.5	3692.	5.7
1067.	3056.	3375.	4.8	3444.	5.0	3511.	5.2	3579.	5.5	3646.	5.7	3712.	6.0
1107.	3172.	3399.	5.0	3467.	5.3	3532.	5.5	3601.	5.7	3668.	6.0		
1148.	3288.	3423.	5.3	3490.	5.5	3561.	5.7	3625.	6.0	3691.	6.2		
1188.	3404.	3447.	5.5	3513.	5.7	3581.	5.9	3649.	6.2				
1229.	3520.	3469.	5.7	3536.	5.9	3606.	6.2	3674.	6.5				
1269.	3636.	3491.	5.9	3566.	6.2	3630.	6.4	3699.	6.7				
1310.	3752.	3512.	6.1	3583.	6.4	3654.	6.7						
1350.	3868.	3531.	6.3	3605.	6.6	3677.	6.9						



Impeller Dia. — 20 3/4 in.
 Tip Speed (FPM) — 5.43 x RPM
 Inlet Dia. — 10 in.
 Area — .5454 sq. ft.
 Outlet Dia. — 8 in.
 Area — .3491 sq. ft.

SIZE
 TBAB 030-110-B

All capacities based on air
 density of .0749 lbs./cu. ft.

MHP includes all drive losses

CFM	OV FT/MIN	19" TP		20" TP		21" TP		22" TP		23" TP		24" TP	
		RPM	MHP	RPM	MHP	RPM	MHP	RPM	MHP	RPM	MHP	RPM	MHP
780.	2235.	2767.	3.6	2839.	3.8	2907.	4.2	2975.	4.4				
839.	2403.	2768.	3.8	2838.	4.0	2907.	4.2	2975.	4.4				
897.	2570.	2772.	4.0	2841.	4.2	2909.	4.4	2975.	4.6	3040.	4.9	3104.	5.1
956.	2738.	2778.	4.2	2846.	4.4	2913.	4.6	2979.	4.9	3043.	5.1	3106.	5.4
1014.	2905.	2778.	4.4	2855.	4.6	2920.	4.9	2985.	5.1	3048.	5.4	3110.	5.6
1073.	3073.	2800.	4.7	2865.	4.9	2930.	5.1	2994.	5.4	3056.	5.7	3117.	5.9
1131.	3241.	2814.	4.9	2879.	5.2	2942.	5.4	3005.	5.7	3066.	5.9	3126.	6.2
1190.	3408.	2830.	5.2	2894.	5.4	2956.	5.7	3018.	6.0	3078.	6.2	3138.	6.5
1248.	3576.	2848.	5.5	2911.	5.7	2972.	6.0	3033.	6.3	3093.	6.5	3152.	6.8
1307.	3744.	2866.	5.7	2929.	6.0	2990.	6.3	3050.	6.6	3109.	6.9	3167.	7.1
1365.	3911.	2886.	6.0	2948.	6.3	3009.	6.6	3068.	6.9	3126.	7.2	3184.	7.5
1424.	4079.	2907.	6.3	2969.	6.6	3029.	6.9	3088.	7.2	3146.	7.6	3204.	7.9
1482.	4246.	2929.	6.7	2990.	7.0	3050.	7.3	3110.	7.6	3168.	7.9	3224.	8.3
1541.	4414.	2950.	7.0	3012.	7.3	3073.	7.7	3132.	8.0	3190.	8.3	3246.	8.7
1599.	4582.	2973.	7.3	3036.	7.7	3097.	8.0	3155.	8.4	3212.	8.7	3268.	9.1
1658.	4749.	2996.	7.7	3059.	8.1	3120.	8.4	3172.	8.7	3229.	9.0	3284.	9.4
1716.	4917.	3018.	8.0	3075.	8.3	3135.	8.7	3194.	9.1	3250.	9.4	3306.	9.8
1775.	5085.	3038.	8.4	3096.	8.7	3157.	9.1	3215.	9.4	3272.	9.8	3327.	10.2
1833.	5252.	3057.	8.7	3115.	9.0	3177.	9.4	3236.	9.8	3293.	10.2	3349.	10.6
1892.	5420.	3072.	9.0	3133.	9.3	3196.	9.8	3256.	10.2	3314.	10.6	3370.	11.0
1950.	5587.	3085.	9.3	3149.	9.7	3213.	10.1	3274.	10.6	3333.	11.0	3396.	11.5

CFM	OV FT/MIN	25" TP		26" TP		27" TP		28" TP		29" TP		30" TP	
		RPM	MHP	RPM	MHP	RPM	MHP	RPM	MHP	RPM	MHP	RPM	MHP
780.	2235.												
839.	2403.												
897.	2570.	3168.	5.4	3230.	5.6	3291.	5.8	3351.	6.1	3410.	6.3	3468.	6.6
956.	2738.	3168.	5.6	3229.	5.9	3289.	6.1	3349.	6.4	3407.	6.6	3465.	6.9
1014.	2905.	3171.	5.9	3232.	6.1	3291.	6.4	3349.	6.7	3407.	6.9	3464.	7.2
1073.	3073.	3177.	6.2	3237.	6.4	3295.	6.7	3353.	7.0	3410.	7.2	3466.	7.5
1131.	3241.	3186.	6.5	3244.	6.7	3302.	7.0	3359.	7.3	3415.	7.5	3470.	7.8
1190.	3408.	3197.	6.8	3254.	7.0	3311.	7.3	3367.	7.6	3422.	7.9	3477.	8.2
1248.	3576.	3209.	7.1	3266.	7.4	3322.	7.7	3378.	8.0	3432.	8.2	3486.	8.5
1307.	3744.	3224.	7.4	3280.	7.7	3336.	8.0	3390.	8.3	3444.	8.6	3497.	8.9
1365.	3911.	3241.	7.8	3297.	8.1	3351.	8.4	3405.	8.7	3458.	9.0	3510.	9.3
1424.	4079.	3260.	8.2	3314.	8.5	3368.	8.8	3421.	9.1	3473.	9.4	3525.	9.7
1482.	4246.	3279.	8.6	3334.	8.9	3387.	9.2	3439.	9.5	3489.	9.8	3543.	10.2
1541.	4414.	3300.	9.0	3354.	9.3	3406.	9.6	3457.	9.9	3507.	10.2	3558.	10.5
1599.	4582.	3322.	9.4	3374.	9.7	3426.	10.0	3476.	10.3	3527.	10.7	3576.	11.0
1658.	4749.	3344.	9.8	3396.	10.1	3446.	10.5	3496.	10.8	3551.	11.2	3596.	11.4
1716.	4917.	3365.	10.2	3417.	10.6	3467.	10.9	3516.	11.2	3567.	11.6	3617.	11.9
1775.	5085.	3387.	10.7	3438.	11.0	3488.	11.3	3541.	11.7	3588.	12.0	3638.	12.4
1833.	5252.	3408.	11.1	3459.	11.4	3509.	11.7	3559.	12.1	3610.	12.5	3660.	12.9
1892.	5420.	3429.	11.5	3480.	11.8	3532.	12.2	3582.	12.6	3633.	13.0	3683.	13.4
1950.	5587.	3449.	11.9	3500.	12.3	3551.	12.7	3604.	13.1	3655.	13.5	3706.	14.0

Impeller Dia. — 17 5/8 in.
 Tip Speed (FPM) — 4.61 x RPM
 Inlet Dia. — 12 in.
 Area — .7853 sq. ft.
 Outlet Dia. — 10 in.
 Area — .5454 sq. ft.

SIZE
 TBAB 040-060-B

All capacities based on air
 density of .0749 lbs./cu. ft.

MHP includes all drive losses

CFM	OV FT/MIN	13" TP		14" TP		15" TP		16" TP		17" TP		18" TP	
		RPM	MHP	RPM	MHP	RPM	MHP	RPM	MHP	RPM	MHP	RPM	MHP
1073.	1968.	2633.	3.6	2734.	4.0								
1160.	2127.	2633.	3.7	2731.	4.1	2826.	4.5						
1247.	2287.	2639.	3.9	2734.	4.3	2827.	4.6	2918.	5.0	3007.	5.4		
1334.	2446.	2650.	4.1	2743.	4.4	2833.	4.8	2921.	5.2	3008.	5.6	3093.	6.0
1421.	2606.	2666.	4.3	2756.	4.6	2843.	5.0	2929.	5.4	3014.	5.8	3097.	6.2
1508.	2765.	2686.	4.5	2773.	4.9	2858.	5.2	2942.	5.6	3024.	6.0	3105.	6.4
1595.	2925.	2709.	4.7	2794.	5.1	2877.	5.5	2959.	5.9	3039.	6.3	3118.	6.7
1682.	3084.	2735.	5.0	2818.	5.4	2900.	5.7	2979.	6.1	3058.	6.6	3135.	7.0
1769.	3244.	2764.	5.3	2845.	5.6	2925.	6.0	3003.	6.4	3079.	6.8	3154.	7.3
1856.	3404.	2795.	5.6	2875.	5.9	2953.	6.3	3029.	6.7	3105.	7.2	3179.	7.6
1943.	3563.	2827.	5.9	2905.	6.3	2984.	6.7	3061.	7.1	3135.	7.6	3208.	8.0
2030.	3723.	2861.	6.2	2943.	6.7	3013.	7.0	3087.	7.4	3160.	7.9	3231.	8.3
2117.	3882.	2893.	6.5	2971.	6.9	3046.	7.4	3119.	7.8	3190.	8.3	3260.	8.7
2204.	4042.	2927.	6.9	3005.	7.3	3080.	7.8	3152.	8.2	3223.	8.7	3292.	9.1
2291.	4201.	2961.	7.2	3039.	7.7	3114.	8.2	3186.	8.6	3256.	9.1	3324.	9.5
2378.	4361.	2995.	7.6	3074.	8.1	3148.	8.6	3220.	9.0	3290.	9.5	3357.	10.0
2465.	4520.	3028.	8.0	3107.	8.5	3183.	9.0	3255.	9.5	3324.	10.0	3391.	10.5
2552.	4680.	3059.	8.3	3140.	8.9	3216.	9.4	3289.	9.9	3359.	10.4	3425.	10.9
2639.	4839.	3087.	8.7	3171.	9.3	3249.	9.8	3323.	10.4	3392.	10.9	3467.	11.5
2726.	4999.	3113.	9.1	3200.	9.7	3280.	10.3	3355.	10.8	3425.	11.4	3496.	12.0
2813.	5159.	3135.	9.4	3226.	10.0	3309.	10.7	3385.	11.3	3457.	11.9	3526.	12.4
2900.	5318.	3152.	9.7	3249.	10.4	3335.	11.1	3414.	11.7	3492.	12.4	3560.	13.0

CFM	OV FT/MIN	19" TP		20" TP		21" TP		22" TP		23" TP		24" TP	
		RPM	MHP	RPM	MHP	RPM	MHP	RPM	MHP	RPM	MHP	RPM	MHP
1073.	1968.												
1160.	2127.												
1247.	2287.												
1334.	2446.	3176.	6.4										
1421.	2606.	3178.	6.6	3258.	7.0	3337.	7.5						
1508.	2765.	3185.	6.9	3263.	7.3	3340.	7.7	3415.	8.2	3490.	8.6	3564.	9.1
1595.	2925.	3195.	7.1	3272.	7.5	3347.	8.0	3421.	8.4	3494.	8.9	3566.	9.4
1682.	3084.	3210.	7.4	3285.	7.8	3358.	8.3	3430.	8.7	3502.	9.2	3572.	9.6
1769.	3244.	3229.	7.7	3302.	8.1	3374.	8.6	3444.	9.0	3513.	9.5	3582.	10.0
1856.	3404.	3252.	8.1	3323.	8.5	3393.	8.9	3461.	9.4	3529.	9.9	3596.	10.3
1943.	3563.	3278.	8.4	3347.	8.9	3414.	9.3	3481.	9.8	3551.	10.3	3613.	10.7
2030.	3723.	3307.	8.8	3373.	9.3	3439.	9.7	3503.	10.1	3568.	10.6	3633.	11.1
2117.	3882.	3329.	9.2	3402.	9.7	3465.	10.1	3529.	10.6	3592.	11.0	3657.	11.5
2204.	4042.	3359.	9.6	3431.	10.1	3492.	10.5	3555.	11.0	3619.	11.5	3683.	12.0
2291.	4201.	3391.	10.0	3461.	10.6	3520.	11.0	3585.	11.5	3649.	12.0	3712.	12.5
2378.	4361.	3423.	10.5	3491.	11.0	3552.	11.5	3617.	12.0	3681.	12.5		
2465.	4520.	3464.	11.1	3520.	11.4	3586.	12.0	3651.	12.5	3707.	13.0		
2552.	4680.	3494.	11.5	3555.	12.0	3622.	12.5	3679.	13.0				
2639.	4839.	3524.	11.9	3592.	12.5	3651.	13.0	3713.	13.6				
2726.	4999.	3560.	12.5	3630.	13.1	3687.	13.6						
2813.	5159.	3597.	13.1	3658.	13.6	3722.	14.2						
2900.	5318.	3634.	13.7	3693.	14.2								



HAUCK[®]

Impeller Dia. — 20 3/4 in.
 Tip Speed (FPM) — 5.43 x RPM
 Inlet Dia. — 12 in.
 Area — .7853 sq. ft.
 Outlet Dia. — 10 in.
 Area — .5454 sq. ft.

SIZE
 TBAB 040-130-E

All capacities based on air density of .0749 lbs./cu. ft.

MHP includes all drive losses

CFM	OV FT/MIN	19" TP		20" TP		21" TP		22" TP		23" TP		24" TP	
		RPM	MHP	RPM	MHP	RPM	MHP	RPM	MHP	RPM	MHP	RPM	MHP
1520.	2787.	2697.	7.1	2769.	7.5	2839.	8.0						
1634.	2996.	2692.	7.4	2762.	7.8	2831.	8.3	2899.	8.8	2966.	9.3	3031.	9.8
1748.	3206.	2692.	7.7	2760.	8.2	2827.	8.7	2894.	9.2	2959.	9.6	3023.	10.1
1862.	3415.	2696.	8.1	2762.	8.6	2828.	9.1	2893.	9.6	2957.	10.1	3020.	10.6
1976.	3624.	2704.	8.6	2769.	9.0	2833.	9.5	2896.	10.0	2959.	10.5	3020.	11.0
2090.	3833.	2715.	9.0	2779.	9.5	2842.	10.0	2903.	10.5	2964.	11.0	3024.	11.5
2204.	4042.	2730.	9.5	2792.	10.0	2853.	10.5	2914.	11.0	2973.	11.5	3032.	12.0
2318.	4251.	2747.	10.0	2808.	10.5	2868.	11.0	2927.	11.5	2986.	12.0	3043.	12.6
2432.	4460.	2766.	10.5	2826.	11.1	2885.	11.6	2943.	12.1	3001.	12.6	3057.	13.2
2546.	4669.	2787.	11.1	2846.	11.6	2905.	12.2	2962.	12.7	3018.	13.3	3073.	13.8
2660.	4878.	2810.	11.7	2868.	12.3	2926.	12.8	2982.	13.3	3037.	13.9	3092.	14.5
2774.	5087.	2833.	12.3	2891.	12.9	2948.	13.5	3004.	14.0	3060.	14.6	3114.	15.2
2888.	5296.	2857.	13.0	2915.	13.6	2973.	14.2	3029.	14.8	3084.	15.4	3138.	16.0
3002.	5505.	2883.	13.7	2943.	14.3	3000.	15.0	3056.	15.6	3104.	16.0	3156.	16.7
3116.	5714.	2910.	14.5	2963.	15.0	3019.	15.6	3074.	16.2	3127.	16.8	3180.	17.4
3230.	5923.	2929.	15.0	2987.	15.7	3044.	16.3	3098.	17.0	3152.	17.6	3204.	18.3
3344.	6132.	2952.	15.7	3011.	16.4	3068.	17.1	3123.	17.8	3176.	18.4	3228.	19.1
3458.	6341.	2973.	16.4	3033.	17.1	3091.	17.9	3146.	18.6	3200.	19.3	3253.	20.0
3572.	6550.	2992.	17.1	3054.	17.9	3113.	18.6	3169.	19.4	3224.	20.1	3277.	20.8
3686.	6759.	3008.	17.8	3072.	18.6	3133.	19.4	3191.	20.2	3246.	21.0	3300.	21.7
3800.	6968.	3022.	18.6	3087.	19.3	3151.	20.1	3210.	21.0	3267.	21.8	3322.	22.6

CFM	OV FT/MIN	25" TP		26" TP		27" TP		28" TP		29" TP		30" TP	
		RPM	MHP	RPM	MHP	RPM	MHP	RPM	MHP	RPM	MHP	RPM	MHP
1520.	2787.												
1634.	2996.												
1748.	3206.	3087.	10.6	3149.	11.1								
1862.	3415.	3082.	11.1	3143.	11.6	3203.	12.1	3262.	12.6	3321.	13.2	3379.	13.7
1976.	3624.	3081.	11.5	3140.	12.0	3199.	12.6	3258.	13.1	3315.	13.6	3372.	14.2
2090.	3833.	3084.	12.0	3142.	12.5	3200.	13.1	3257.	13.6	3313.	14.2	3369.	14.7
2204.	4042.	3090.	12.5	3147.	13.1	3204.	13.6	3260.	14.2	3315.	14.7	3369.	15.3
2318.	4251.	3100.	13.1	3156.	13.6	3211.	14.2	3266.	14.8	3320.	15.3	3373.	15.9
2432.	4460.	3113.	13.7	3168.	14.3	3222.	14.8	3275.	15.4	3328.	16.0	3381.	16.5
2546.	4669.	3128.	14.3	3182.	14.9	3235.	15.5	3288.	16.1	3340.	16.7	3391.	17.2
2660.	4878.	3146.	15.1	3200.	15.6	3252.	16.2	3303.	16.8	3354.	17.4	3404.	18.0
2774.	5087.	3167.	15.8	3219.	16.4	3270.	17.0	3321.	17.6	3370.	18.1	3419.	18.7
2888.	5296.	3190.	16.6	3241.	17.2	3291.	17.8	3340.	18.4	3389.	18.9	3436.	19.5
3002.	5505.	3213.	17.5	3264.	18.0	3313.	18.6	3361.	19.2	3408.	19.8	3456.	20.4
3116.	5714.	3231.	18.1	3287.	18.9	3335.	19.5	3383.	20.1	3429.	20.6	3481.	21.4
3230.	5923.	3255.	18.9	3311.	19.8	3359.	20.4	3405.	20.9	3450.	21.5	3498.	22.2
3344.	6132.	3279.	19.8	3335.	20.7	3382.	21.2	3427.	21.8	3479.	22.6	3521.	23.1
3458.	6341.	3304.	20.6	3359.	21.6	3405.	22.1	3450.	22.7	3498.	23.4	3546.	24.1
3572.	6550.	3328.	21.5	3383.	22.4	3428.	23.0	3481.	23.9	3523.	24.4	3571.	25.2
3686.	6759.	3358.	22.7	3405.	23.3	3451.	23.9	3500.	24.7	3549.	25.5	3597.	26.3
3800.	6968.	3379.	23.6	3427.	24.2	3481.	25.2	3525.	25.7	3574.	26.6	3622.	27.4

Impeller Dia. — 18 1/8 in.
 Tip Speed (FPM) — 4.74 x RPM
 Inlet Dia. — 14 in.
 Area — 1.069 sq. ft.
 Outlet Dia. — 12 in.
 Area — .7853 sq. ft.

SIZE
 TBAB 050-070-C

All capacities based on air
 density of .0749 lbs./cu. ft.

MHP includes all drive losses

CFM	OV FT/MIN	13" TP		14" TP		15" TP		16" TP		17" TP		18" TP	
		RPM	MHP	RPM	MHP	RPM	MHP	RPM	MHP	RPM	MHP	RPM	MHP
1480.	1885.	2610.	5.5	2706.	6.1	2800.	6.6	2891.	7.2	2979.	7.8	3064.	8.4
1600.	2038.	2614.	5.7	2710.	6.3	2802.	6.9	2892.	7.4	2979.	8.0	3064.	8.7
1720.	2190.	2621.	6.0	2715.	6.5	2807.	7.1	2895.	7.7	2982.	8.3	3066.	8.9
1840.	2343.	2629.	6.2	2722.	6.8	2813.	7.4	2901.	8.0	2986.	8.6	3070.	9.2
1960.	2496.	2639.	6.5	2731.	7.1	2821.	7.6	2908.	8.3	2993.	8.9	3075.	9.5
2080.	2649.	2650.	6.7	2742.	7.3	2830.	7.9	2917.	8.6	3001.	9.2	3082.	9.8
2200.	2802.	2663.	7.0	2754.	7.6	2842.	8.3	2927.	8.9	3010.	9.5	3091.	10.2
2320.	2954.	2678.	7.3	2767.	8.0	2854.	8.6	2939.	9.2	3021.	9.9	3101.	10.5
2440.	3107.	2693.	7.7	2782.	8.3	2868.	8.9	2952.	9.6	3033.	10.2	3113.	10.9
2560.	3260.	2710.	8.0	2798.	8.6	2883.	9.3	2966.	10.0	3047.	10.6	3126.	11.3
2680.	3413.	2728.	8.3	2815.	9.0	2899.	9.7	2982.	10.3	3062.	11.0	3140.	11.7
2800.	3566.	2747.	8.7	2833.	9.4	2917.	10.0	2998.	10.7	3078.	11.5	3155.	12.2
2920.	3719.	2766.	9.0	2852.	9.7	2935.	10.5	3016.	11.2	3094.	11.9	3172.	12.6
3040.	3871.	2787.	9.4	2872.	10.1	2954.	10.9	3034.	11.6	3113.	12.4	3190.	13.1
3160.	4024.	2808.	9.8	2892.	10.6	2974.	11.3	3055.	12.1	3133.	12.8	3209.	13.6
3280.	4177.	2830.	10.2	2914.	11.0	2996.	11.8	3076.	12.6	3154.	13.4	3229.	14.1
3400.	4330.	2853.	10.6	2937.	11.4	3020.	12.3	3099.	13.1	3176.	13.9	3250.	14.7
3520.	4483.	2877.	11.1	2962.	11.9	3044.	12.8	3116.	13.5	3191.	14.3	3271.	15.2
3640.	4635.	2905.	11.6	2981.	12.3	3061.	13.1	3138.	13.9	3213.	14.8	3286.	15.6
3760.	4788.	2924.	12.0	3005.	12.8	3084.	13.6	3160.	14.5	3235.	15.3	3308.	16.2
3880.	4941.	2948.	12.4	3029.	13.3	3107.	14.1	3184.	15.0	3258.	15.8	3330.	16.7
4000.	5094.	2974.	12.9	3054.	13.8	3132.	14.6	3207.	15.5	3281.	16.4	3353.	17.3

CFM	OV FT/MIN	19" TP		20" TP		21" TP		22" TP		23" TP		24" TP	
		RPM	MHP	RPM	MHP	RPM	MHP	RPM	MHP	RPM	MHP	RPM	MHP
1480.	1885.												
1600.	2038.	3147.	9.3	3228.	9.9	3307.	10.6						
1720.	2190.	3148.	9.6	3228.	10.2	3307.	10.9	3384.	11.5	3459.	12.2		
1840.	2343.	3151.	9.9	3231.	10.5	3308.	11.2	3385.	11.9	3459.	12.6	3532.	13.3
1960.	2496.	3156.	10.2	3235.	10.8	3312.	11.5	3387.	12.2	3461.	12.9	3534.	13.6
2080.	2649.	3162.	10.5	3240.	11.2	3317.	11.9	3392.	12.6	3465.	13.3	3537.	14.0
2200.	2802.	3170.	10.9	3248.	11.5	3323.	12.2	3398.	12.9	3470.	13.6	3541.	14.4
2320.	2954.	3180.	11.2	3257.	11.9	3332.	12.6	3405.	13.3	3477.	14.0	3548.	14.8
2440.	3107.	3191.	11.6	3267.	12.3	3341.	13.0	3414.	13.8	3486.	14.5	3555.	15.2
2560.	3260.	3203.	12.0	3278.	12.7	3352.	13.5	3424.	14.2	3496.	15.0	3564.	15.7
2680.	3413.	3217.	12.5	3291.	13.2	3365.	13.9	3436.	14.7	3508.	15.5	3575.	16.2
2800.	3566.	3232.	12.9	3306.	13.7	3378.	14.4	3448.	15.1	3518.	15.9	3586.	16.7
2920.	3719.	3248.	13.4	3321.	14.1	3392.	14.9	3462.	15.6	3531.	16.4	3599.	17.2
3040.	3871.	3265.	13.9	3337.	14.6	3408.	15.4	3477.	16.2	3545.	16.9	3613.	17.8
3160.	4024.	3283.	14.4	3354.	15.2	3424.	15.9	3494.	16.7	3561.	17.5	3628.	18.3
3280.	4177.	3302.	14.9	3372.	15.7	3441.	16.5	3513.	17.4	3577.	18.1	3644.	18.9
3400.	4330.	3321.	15.5	3391.	16.2	3459.	17.0	3527.	17.8	3594.	18.7	3661.	19.5
3520.	4483.	3342.	16.0	3410.	16.8	3477.	17.6	3545.	18.4	3612.	19.3	3678.	20.2
3640.	4635.	3362.	16.6	3430.	17.3	3500.	18.2	3565.	19.0	3631.	19.9	3697.	20.8
3760.	4788.	3383.	17.1	3450.	17.9	3517.	18.7	3585.	19.7	3651.	20.6		
3880.	4941.	3405.	17.7	3470.	18.5	3538.	19.4	3606.	20.3	3672.	21.3		
4000.	5094.	3426.	18.3	3494.	19.2	3560.	20.0	3628.	21.0	3694.	22.0		



HAUCK®

Impeller Dia. — 20 3/4 in.
 Tip Speed (FPM) — 5.43 x RPM
 Inlet Dia. — 14 in.
 Area — 1.069 sq. ft.
 Outlet Dia. — 12 in.
 Area — .7853 sq. ft.

SIZE
 TBAB 050-150-E

All capacities based on air density of .0749 lbs./cu. ft.

MHP includes all drive losses

CFM	OV FT/MIN	19" TP		20" TP		21" TP		22" TP		23" TP		24" TP	
		RPM	MHP	RPM	MHP	RPM	MHP	RPM	MHP	RPM	MHP	RPM	MHP
2400.	3056.	2791.	12.4	2864.	13.1	2934.	13.9	3004.	14.7	3072.	15.5	3138.	16.4
2580.	3286.	2793.	13.0	2864.	13.7	2933.	14.5	3001.	15.4	3068.	16.2	3134.	17.0
2760.	3515.	2798.	13.6	2867.	14.4	2935.	15.2	3002.	16.0	3068.	16.9	3132.	17.7
2940.	3744.	2806.	14.3	2874.	15.1	2941.	15.9	3007.	16.8	3071.	17.6	3135.	18.5
3120.	3973.	2817.	15.0	2884.	15.8	2950.	16.7	3014.	17.6	3077.	18.4	3140.	19.3
3300.	4202.	2831.	15.8	2896.	16.6	2961.	17.5	3024.	18.4	3087.	19.3	3148.	20.2
3480.	4432.	2847.	16.6	2911.	17.5	2975.	18.4	3037.	19.3	3099.	20.2	3159.	21.1
3660.	4661.	2865.	17.5	2928.	18.4	2991.	19.3	3053.	20.2	3113.	21.1	3173.	22.1
3840.	4890.	2884.	18.4	2947.	19.3	3009.	20.2	3070.	21.2	3129.	22.1	3188.	23.1
4020.	5119.	2905.	19.3	2967.	20.2	3029.	21.2	3088.	22.2	3148.	23.2	3206.	24.2
4200.	5349.	2927.	20.2	2989.	21.2	3049.	22.2	3110.	23.3	3169.	24.3	3226.	25.4
4380.	5578.	2949.	21.2	3011.	22.3	3073.	23.4	3132.	24.5	3191.	25.5	3247.	26.6
4560.	5807.	2973.	22.3	3036.	23.4	3097.	24.5	3156.	25.6	3214.	26.7	3270.	27.8
4740.	6036.	2997.	23.4	3061.	24.6	3121.	25.7	3180.	26.9	3237.	28.0	3292.	29.1
4920.	6266.	3022.	24.4	3078.	25.4	3138.	26.6	3197.	27.7	3254.	28.9	3315.	30.3
5100.	6495.	3038.	25.2	3101.	26.5	3161.	27.7	3220.	28.9	3277.	30.1	3338.	31.6
5280.	6724.	3058.	26.2	3122.	27.5	3183.	28.8	3242.	30.0	3299.	31.3	3361.	32.9
5460.	6953.	3077.	27.1	3142.	28.5	3204.	29.9	3264.	31.2	3321.	32.5	3383.	34.1
5640.	7182.	3094.	28.1	3160.	29.5	3224.	30.9	3284.	32.3	3349.	34.1	3404.	35.3
5820.	7412.	3111.	29.1	3176.	30.4	3241.	32.0	3303.	33.5	3368.	35.2	3424.	36.5
6000.	7641.	3119.	29.7	3192.	31.5	3261.	33.2	3325.	34.8	3386.	36.3	3443.	37.7

CFM	OV FT/MIN	25" TP		26" TP		27" TP		28" TP		29" TP		30" TP	
		RPM	MHP	RPM	MHP	RPM	MHP	RPM	MHP	RPM	MHP	RPM	MHP
2400.	3056.	3204.	17.2	3269.	18.1								
2580.	3286.	3198.	17.9	3262.	18.8	3324.	19.6	3386.	20.5	3447.	21.4	3506.	22.4
2760.	3515.	3196.	18.6	3259.	19.5	3320.	20.4	3381.	21.3	3441.	22.2	3500.	23.2
2940.	3744.	3197.	19.4	3259.	20.3	3319.	21.2	3379.	22.1	3438.	23.0	3496.	24.0
3120.	3973.	3201.	20.2	3262.	21.1	3322.	22.0	3380.	23.0	3439.	23.9	3496.	24.9
3300.	4202.	3209.	21.1	3268.	22.0	3327.	22.9	3385.	23.9	3442.	24.8	3499.	25.9
3480.	4432.	3219.	22.0	3277.	23.0	3335.	23.9	3392.	24.9	3448.	25.9	3504.	26.9
3660.	4661.	3231.	23.0	3289.	24.0	3346.	25.0	3402.	25.9	3457.	26.9	3513.	28.1
3840.	4890.	3246.	24.1	3303.	25.1	3359.	26.1	3414.	27.1	3469.	28.0	3522.	29.0
4020.	5119.	3263.	25.2	3320.	26.2	3375.	27.2	3429.	28.2	3482.	29.2	3535.	30.2
4200.	5349.	3282.	26.4	3338.	27.4	3392.	28.4	3445.	29.4	3498.	30.5	3550.	31.5
4380.	5578.	3303.	27.6	3357.	28.6	3410.	29.7	3463.	30.7	3518.	31.9	3566.	32.8
4560.	5807.	3324.	28.9	3378.	29.9	3430.	30.9	3481.	31.9	3533.	33.0	3585.	34.1
4740.	6036.	3346.	30.1	3399.	31.2	3450.	32.2	3503.	33.4	3553.	34.4	3604.	35.6
4920.	6266.	3369.	31.4	3421.	32.5	3471.	33.5	3523.	34.6	3574.	35.8	3625.	37.0
5100.	6495.	3391.	32.7	3443.	33.8	3493.	34.9	3545.	36.1	3596.	37.3	3647.	38.6
5280.	6724.	3413.	34.0	3464.	35.1	3521.	36.6	3568.	37.5	3619.	38.8	3670.	40.1
5460.	6953.	3435.	35.3	3486.	36.4	3539.	37.7	3591.	39.0	3643.	40.4	3694.	41.7
5640.	7182.	3456.	36.5	3513.	38.0	3562.	39.1	3615.	40.5	3667.	42.0	3718.	43.4
5820.	7412.	3477.	37.8	3531.	39.1	3585.	40.6	3638.	42.1	3690.	43.6		
6000.	7641.	3498.	39.1	3553.	40.5	3607.	42.1	3661.	43.6	3714.	45.2		

Impeller Dia. — 25 1/4 in.
 Tip Speed (FPM) — 6.61 x RPM
 Inlet Dia. — 10 in.
 Area — .5454 sq. ft.
 Outlet Dia. — 6 in.
 Area — .1963 sq. ft.

SIZE
 TBAB 060-250-B

All capacities based on air
 density of .0749 lbs./cu. ft.

MHP includes all drive losses

CFM	OV FT/MIN	26" TP		28" TP		30" TP		32" TP		34" TP		36" TP	
		RPM	MHP	RPM	MHP	RPM	MHP	RPM	MHP	RPM	MHP	RPM	MHP
320.	1630.	2802.	3.3	2909.	3.6	3013.	4.0	3113.	4.3	3210.	4.7	3304.	5.1
344.	1752.	2799.	3.4	2905.	3.7	3008.	4.1	3108.	4.5	3204.	4.8	3298.	5.2
368.	1875.	2797.	3.5	2903.	3.9	3005.	4.2	3104.	4.6	3200.	4.9	3293.	5.3
392.	1997.	2796.	3.6	2901.	4.0	3002.	4.3	3101.	4.7	3196.	5.1	3289.	5.5
416.	2119.	2797.	3.7	2900.	4.1	3001.	4.5	3099.	4.8	3194.	5.2	3286.	5.6
440.	2241.	2799.	3.9	2901.	4.2	3001.	4.6	3098.	5.0	3192.	5.3	3284.	5.7
464.	2364.	2802.	4.0	2904.	4.3	3002.	4.7	3099.	5.1	3192.	5.5	3283.	5.9
488.	2486.	2806.	4.1	2907.	4.5	3005.	4.9	3100.	5.2	3193.	5.6	3283.	6.0
512.	2608.	2812.	4.2	2912.	4.6	3009.	5.0	3103.	5.4	3195.	5.8	3285.	6.2
536.	2730.	2818.	4.4	2918.	4.8	3014.	5.2	3107.	5.6	3198.	6.0	3287.	6.4
560.	2853.	2826.	4.5	2925.	4.9	3020.	5.3	3113.	5.7	3203.	6.1	3291.	6.6
584.	2975.	2835.	4.7	2933.	5.1	3027.	5.5	3119.	5.9	3209.	6.3	3296.	6.7
608.	3097.	2845.	4.9	2942.	5.3	3035.	5.7	3126.	6.1	3215.	6.5	3302.	6.9
632.	3219.	2856.	5.0	2952.	5.4	3045.	5.8	3135.	6.3	3223.	6.7	3309.	7.1
656.	3342.	2868.	5.2	2962.	5.6	3055.	6.0	3144.	6.5	3232.	6.9	3317.	7.3
680.	3464.	2880.	5.4	2974.	5.8	3066.	6.2	3155.	6.7	3241.	7.1	3326.	7.5
704.	3586.	2892.	5.5	2986.	6.0	3077.	6.4	3165.	6.9	3252.	7.3	3336.	7.8
728.	3708.	2905.	5.7	2999.	6.2	3089.	6.6	3177.	7.1	3263.	7.5	3346.	8.0
752.	3831.	2918.	5.9	3012.	6.4	3102.	6.8	3190.	7.3	3275.	7.8	3358.	8.2
776.	3953.	2932.	6.1	3025.	6.5	3115.	7.0	3203.	7.5	3288.	8.0	3370.	8.5
800.	4075.	2945.	6.3	3038.	6.7	3129.	7.2	3216.	7.7	3301.	8.2	3382.	8.7

CFM	OV FT/MIN	38" TP		40" TP		42" TP		44" TP		46" TP		48" TP	
		RPM	MHP	RPM	MHP	RPM	MHP	RPM	MHP	RPM	MHP	RPM	MHP
320.	1630.	3396.	5.4	3486.	5.8	3574.	6.2	3660.	6.6				
344.	1752.	3390.	5.6	3479.	6.0	3567.	6.4	3652.	6.8				
368.	1875.	3384.	5.7	3473.	6.1	3560.	6.5	3645.	6.9				
392.	1997.	3380.	5.8	3468.	6.2	3554.	6.7	3639.	7.1				
416.	2119.	3376.	6.0	3464.	6.4	3550.	6.8	3634.	7.2				
440.	2241.	3373.	6.1	3461.	6.5	3546.	7.0	3630.	7.4	3711.	7.8		
464.	2364.	3372.	6.3	3459.	6.7	3543.	7.1	3626.	7.5	3708.	8.0		
488.	2486.	3371.	6.5	3458.	6.9	3542.	7.3	3624.	7.7	3705.	8.2		
512.	2608.	3372.	6.6	3458.	7.0	3541.	7.5	3623.	7.9	3703.	8.4		
536.	2730.	3374.	6.8	3459.	7.2	3542.	7.7	3623.	8.1	3703.	8.5		
560.	2853.	3377.	7.0	3461.	7.4	3544.	7.8	3624.	8.3	3703.	8.8		
584.	2975.	3381.	7.2	3465.	7.6	3546.	8.0	3626.	8.5	3705.	9.0		
608.	3097.	3387.	7.4	3469.	7.8	3550.	8.3	3630.	8.7	3707.	9.2		
632.	3219.	3393.	7.6	3475.	8.0	3555.	8.5	3634.	8.9	3711.	9.4		
656.	3342.	3400.	7.8	3481.	8.2	3561.	8.7	3639.	9.2				
680.	3464.	3408.	8.0	3489.	8.5	3568.	8.9	3646.	9.4				
704.	3586.	3418.	8.2	3497.	8.7	3576.	9.2	3653.	9.6				
728.	3708.	3427.	8.5	3507.	8.9	3584.	9.4	3661.	9.9				
752.	3831.	3438.	8.7	3518.	9.2	3594.	9.7	3670.	10.2				
776.	3953.	3449.	8.9	3530.	9.5	3604.	9.9	3680.	10.4				
800.	4075.	3461.	9.2	3538.	9.7	3615.	10.2	3690.	10.7				



Impeller Dia. — 25 1/4 in.
 Tip Speed (FPM) — 6.61 x RPM
 Inlet Dia. — 10 in.
 Area — .5454 sq. ft.
 Outlet Dia. — 6 in.
 Area — .1963 sq. ft.

SIZE
 TBAB 061-251

All capacities based on air density of .0749 lbs./cu. ft.

MHP includes all drive losses

CFM	OV FT/MIN	48" TP		50" TP		52" TP		54" TP		56" TP	
		RPM	MHP	RPM	MHP	RPM	MHP	RPM	MHP	RPM	MHP
200.	1019.	3816.	6.1	3896.	6.5	3974.	6.8	4051.	7.2	4127.	7.6
250.	1273.	3800.	6.4	3879.	6.7	3958.	7.1	4035.	7.5	4110.	7.9
300.	1528.	3785.	6.6	3865.	7.0	3943.	7.4	4020.	7.8	4095.	8.2
350.	1783.	3773.	6.9	3852.	7.3	3930.	7.7	4007.	8.1	4082.	8.5
400.	2037.	3763.	7.2	3842.	7.6	3920.	8.0	3996.	8.4	4071.	8.9
450.	2292.	3756.	7.5	3834.	7.9	3911.	8.4	3987.	8.8	4062.	9.2
500.	2546.	3751.	7.8	3829.	8.3	3905.	8.7	3981.	9.1	4055.	9.6
550.	2801.	3748.	8.2	3826.	8.6	3902.	9.1	3977.	9.5	4050.	10.0
600.	3056.	3748.	8.5	3825.	9.0	3901.	9.4	3975.	9.9	4048.	10.4
650.	3310.	3751.	8.9	3827.	9.4	3902.	9.8	3976.	10.3	4048.	10.8
700.	3565.	3756.	9.3	3832.	9.8	3906.	10.3	3979.	10.7	4051.	11.2
750.	3820.	3765.	9.8	3839.	10.2	3913.	10.7	3985.	11.2	4056.	11.7
800.	4074.	3777.	10.2	3849.	10.7	3922.	11.2	3994.	11.7	4064.	12.2
850.	4329.	3792.	10.7	3862.	11.2	3934.	11.7	4005.	12.2	4074.	12.7
900.	4584.	3810.	11.3	3877.	11.7	3948.	12.2	4018.	12.7	4087.	13.2
950.	4838.	3825.	11.7	3896.	12.2	3966.	12.7	4035.	13.3	4103.	13.8
1000.	5093.	3846.	12.3	3916.	12.8	3985.	13.3	4053.	13.9	4121.	14.4
1050.	5348.	3870.	12.9	3939.	13.4	4007.	13.9	4075.	14.5	4141.	15.1
1100.	5602.	3897.	13.5	3965.	14.0	4032.	14.6	4098.	15.2	4164.	15.7
1150.	5857.	3925.	14.1	3993.	14.7	4059.	15.3	4124.	15.9	4189.	16.4
1200.	6112.	3955.	14.8	4023.	15.4	4088.	16.0	4153.	16.6	4216.	17.2
1250.	6366.	3987.	15.5	4055.	16.2	4120.	16.8	4183.	17.4	4246.	18.0
1300.	6621.	4039.	16.6	4092.	17.0	4154.	17.6	4216.	18.2	4278.	18.8
1350.	6875.	4081.	17.5	4129.	17.8	4189.	18.4	4251.	19.0	4311.	19.7

CFM	OV FT/MIN	58" TP		60" TP		62" TP		64" TP		
		RPM	MHP	RPM	MHP	RPM	MHP	RPM	MHP	
200.	1019.	4201.	8.0	4274.	8.4	4346.	8.8	4417.	9.2	
250.	1273.	4184.	8.3	4257.	8.7	4329.	9.1	4400.	9.5	
300.	1528.	4169.	8.6	4242.	9.0	4313.	9.5	4384.	9.9	
350.	1783.	4156.	9.0	4228.	9.4	4300.	9.8	4370.	10.2	
400.	2037.	4144.	9.3	4216.	9.7	4288.	10.2	4358.	10.6	
450.	2292.	4135.	9.7	4207.	10.1	4278.	10.6	4347.	11.0	
500.	2546.	4128.	10.0	4199.	10.5	4270.	11.0	4339.	11.4	
550.	2801.	4123.	10.4	4194.	10.9	4264.	11.4	4333.	11.8	
600.	3056.	4120.	10.8	4191.	11.3	4261.	11.8	4329.	12.3	
650.	3310.	4120.	11.3	4190.	11.8	4259.	12.2	4328.	12.7	
700.	3565.	4122.	11.7	4192.	12.2	4260.	12.7	4328.	13.2	
750.	3820.	4127.	12.2	4196.	12.7	4264.	13.2	4331.	13.7	
800.	4074.	4134.	12.7	4202.	13.2	4270.	13.7	4336.	14.3	
850.	4329.	4143.	13.2	4211.	13.7	4278.	14.3	4344.	14.8	
900.	4584.	4155.	13.8	4222.	14.3	4289.	14.9	4354.	15.4	
950.	4838.	4170.	14.4	4236.	14.9	4302.	15.5	4366.	16.0	
1000.	5093.	4187.	15.0	4252.	15.5	4317.	16.1	4381.	16.7	
1050.	5348.	4206.	15.6	4271.	16.2	4335.	16.8	4398.	17.3	
1100.	5602.	4228.	16.3	4292.	16.9	4355.	17.5			
1150.	5857.	4253.	17.0	4316.	17.6	4378.	18.2			
1200.	6112.	4279.	17.8	4341.	18.4					
1250.	6366.	4308.	18.6	4369.	19.2					
1300.	6621.	4339.	19.4	4399.	20.0					
1350.	6875.	4372.	20.3							

Impeller Dia. — 25 1/2 in.
 Tip Speed (FPM) — 6.67 x RPM
 Inlet Dia. — 12 in.
 Area — .7853 sq. ft.
 Outlet Dia. — 8 in.
 Area — .3491 sq. ft.

SIZE
 TBAB 070-270-C

All capacities based on air
 density of .0749 lbs./cu. ft.

MHP includes all drive losses

CFM	OV FT/MIN	26" TP		28" TP		30" TP		32" TP		34" TP		36" TP	
		RPM	MHP	RPM	MHP	RPM	MHP	RPM	MHP	RPM	MHP	RPM	MHP
740.	2120.	2713.	5.4	2816.	6.0	2916.	6.5	3013.	7.0	3107.	7.6	3199.	8.1
796.	2279.	2709.	5.7	2812.	6.2	2911.	6.7	3007.	7.3	3100.	7.8	3191.	8.4
851.	2438.	2708.	5.9	2809.	6.4	2907.	7.0	3002.	7.5	3095.	8.1	3185.	8.7
907.	2597.	2708.	6.2	2808.	6.7	2905.	7.3	2999.	7.8	3091.	8.4	3180.	9.0
962.	2756.	2712.	6.4	2810.	7.0	2905.	7.5	2998.	8.1	3089.	8.7	3177.	9.3
1018.	2915.	2718.	6.7	2814.	7.3	2908.	7.8	3000.	8.4	3089.	9.0	3176.	9.6
1073.	3074.	2726.	7.0	2821.	7.6	2913.	8.2	3003.	8.8	3091.	9.4	3177.	10.0
1129.	3234.	2737.	7.3	2830.	7.9	2921.	8.5	3009.	9.1	3096.	9.7	3181.	10.4
1184.	3393.	2752.	7.7	2842.	8.3	2931.	8.9	3018.	9.5	3103.	10.1	3186.	10.8
1240.	3552.	2768.	8.1	2857.	8.7	2943.	9.3	3029.	9.9	3112.	10.5	3194.	11.2
1295.	3711.	2788.	8.4	2874.	9.1	2959.	9.7	3042.	10.3	3124.	11.0	3204.	11.6
1351.	3870.	2811.	8.9	2894.	9.5	2977.	10.1	3058.	10.8	3138.	11.4	3217.	12.1
1406.	4029.	2836.	9.3	2917.	10.0	2998.	10.6	3077.	11.2	3156.	11.9	3233.	12.6
1462.	4188.	2863.	9.8	2943.	10.4	3023.	11.1	3101.	11.8	3177.	12.5	3252.	13.2
1517.	4347.	2898.	10.4	2976.	11.1	3053.	11.7	3128.	12.4	3201.	13.1	3274.	13.7
1573.	4506.	2925.	10.9	3000.	11.5	3074.	12.2	3147.	12.8	3220.	13.5	3298.	14.4
1628.	4665.	2961.	11.5	3033.	12.1	3105.	12.8	3176.	13.4	3246.	14.1	3316.	14.8
1684.	4824.	3001.	12.2	3070.	12.8	3138.	13.4	3207.	14.1	3275.	14.8	3343.	15.5
1739.	4983.	3035.	12.7	3110.	13.5	3175.	14.1	3241.	14.8	3306.	15.5	3372.	16.2
1795.	5142.	3080.	13.5	3143.	14.1	3216.	14.9	3277.	15.6	3340.	16.2	3411.	17.1
1850.	5301.	3120.	14.2	3188.	14.9	3247.	15.5	3317.	16.4	3375.	17.0	3440.	17.8

CFM	OV FT/MIN	38" TP		40" TP		42" TP		44" TP		46" TP		48" TP	
		RPM	MHP	RPM	MHP	RPM	MHP	RPM	MHP	RPM	MHP	RPM	MHP
740.	2120.	3288.	8.7	3375.	9.3	3459.	9.9	3542.	10.5	3623.	11.1	3702.	11.7
796.	2279.	3279.	9.0	3366.	9.6	3450.	10.2	3532.	10.8	3613.	11.4	3691.	12.0
851.	2438.	3273.	9.3	3358.	9.9	3442.	10.5	3524.	11.1	3604.	11.8	3682.	12.4
907.	2597.	3267.	9.6	3352.	10.2	3435.	10.8	3516.	11.5	3596.	12.1	3674.	12.8
962.	2756.	3263.	9.9	3348.	10.6	3430.	11.2	3510.	11.8	3589.	12.5	3667.	13.1
1018.	2915.	3261.	10.3	3345.	10.9	3426.	11.5	3506.	12.2	3584.	12.9	3661.	13.5
1073.	3074.	3261.	10.6	3344.	11.3	3424.	11.9	3504.	12.6	3581.	13.2	3657.	13.9
1129.	3234.	3264.	11.0	3345.	11.7	3425.	12.3	3503.	13.0	3579.	13.7	3655.	14.4
1184.	3393.	3268.	11.4	3348.	12.1	3427.	12.7	3504.	13.4	3580.	14.1	3654.	14.8
1240.	3552.	3274.	11.8	3353.	12.5	3431.	13.2	3507.	13.9	3582.	14.6	3655.	15.3
1295.	3711.	3283.	12.3	3361.	13.0	3437.	13.6	3512.	14.3	3586.	15.0	3659.	15.8
1351.	3870.	3295.	12.8	3371.	13.5	3446.	14.1	3520.	14.8	3592.	15.6	3664.	16.3
1406.	4029.	3309.	13.3	3384.	14.0	3457.	14.6	3529.	15.4	3601.	16.1	3671.	16.8
1462.	4188.	3326.	13.8	3398.	14.5	3470.	15.2	3541.	15.9	3611.	16.7	3681.	17.4
1517.	4347.	3345.	14.4	3415.	15.1	3488.	15.9	3555.	16.5	3624.	17.2	3693.	18.0
1573.	4506.	3366.	15.0	3434.	15.7	3502.	16.4	3571.	17.1	3640.	17.9	3707.	18.7
1628.	4665.	3389.	15.6	3454.	16.3	3522.	17.0	3590.	17.8	3657.	18.6		
1684.	4824.	3414.	16.3	3480.	17.0	3545.	17.7	3612.	18.5	3678.	19.3		
1739.	4983.	3440.	16.9	3503.	17.6	3570.	18.4	3636.	19.3	3702.	20.1		
1795.	5142.	3466.	17.6	3533.	18.4	3599.	19.3	3657.	19.9				
1850.	5301.	3499.	18.4	3566.	19.3	3623.	19.9	3685.	20.7				



Impeller Dia. — 25 1/2 in.
 Tip Speed (FPM) — 6.67 x RPM
 Inlet Dia. — 12 in.
 Area — .7853 sq. ft.
 Outlet Dia. — 8 in.
 Area — .3491 sq. ft.

SIZE
 TBAB 071-271-E

All capacities based on air
 density of .0749 lbs./cu. ft.

MHP includes all drive losses

CFM	OV FT/MIN	48" TP		50" TP		52" TP		54" TP		56" TP		58" TP	
		RPM	MHP	RPM	MHP	RPM	MHP	RPM	MHP	RPM	MHP	RPM	MHP
880.	2521.	3664.	14.0	3742.	14.8	3818.	15.6	3893.	16.5				
946.	2711.	3651.	14.2	3729.	15.0	3804.	15.9	3879.	16.7	3952.	17.6	4024.	18.4
1012.	2900.	3639.	14.5	3716.	15.3	3791.	16.1	3865.	16.9	3938.	17.8	4010.	18.7
1078.	3089.	3630.	14.8	3706.	15.6	3780.	16.4	3853.	17.2	3925.	18.1	3996.	18.9
1144.	3278.	3623.	15.1	3698.	15.9	3771.	16.7	3844.	17.6	3915.	18.4	3985.	19.3
1210.	3467.	3620.	15.5	3694.	16.3	3766.	17.1	3837.	17.9	3907.	18.8	3976.	19.6
1276.	3656.	3622.	16.0	3693.	16.8	3764.	17.6	3834.	18.4	3903.	19.2	3971.	20.1
1342.	3845.	3627.	16.5	3697.	17.3	3766.	18.1	3834.	18.9	3902.	19.7	3969.	20.6
1408.	4034.	3637.	17.1	3705.	17.9	3772.	18.7	3839.	19.5	3905.	20.3	3970.	21.1
1474.	4223.	3651.	17.7	3717.	18.5	3783.	19.3	3848.	20.1	3912.	20.9	3976.	21.8
1540.	4413.	3667.	18.4	3733.	19.2	3797.	20.0	3860.	20.8	3923.	21.6	3986.	22.5
1606.	4602.	3688.	19.2	3752.	20.0	3815.	20.8	3877.	21.6	3938.	22.4	3999.	23.2
1672.	4791.	3712.	20.0	3774.	20.8	3835.	21.6	3896.	22.4	3956.	23.2	4016.	24.1
1738.	4980.	3737.	20.9	3798.	21.7	3859.	22.5	3919.	23.3	3979.	24.2	4037.	25.0
1804.	5169.	3766.	21.8	3827.	22.7	3888.	23.5	3947.	24.4	4004.	25.2	4061.	26.1
1870.	5358.	3797.	22.9	3858.	23.8	3918.	24.6	3976.	25.5	4032.	26.3	4088.	27.2
1936.	5547.	3820.	23.7	3880.	24.6	3939.	25.4	3996.	26.3	4053.	27.1	4116.	28.3
2002.	5736.	3848.	24.7	3908.	25.6	3967.	26.5	4025.	27.3	4081.	28.2	4136.	29.1
2068.	5926.	3874.	25.6	3935.	26.6	3995.	27.5	4053.	28.4	4109.	29.3	4164.	30.3
2134.	6115.	3897.	26.6	3960.	27.6	4021.	28.6	4080.	29.5	4137.	30.5	4193.	31.4
2200.	6304.	3915.	27.5	3982.	28.5	4045.	29.6	4105.	30.6	4164.	31.6	4228.	32.9

CFM	OV FT/MIN	60" TP		62" TP		64" TP		66" TP		68" TP		70" TP	
		RPM	MHP	RPM	MHP	RPM	MHP	RPM	MHP	RPM	MHP	RPM	MHP
880.	2521.												
946.	2711.	4095.	19.3	4164.	20.2								
1012.	2900.	4080.	19.5	4149.	20.4	4218.	21.4	4285.	22.3	4351.	23.2	4416.	24.2
1078.	3089.	4066.	19.8	4135.	20.7	4203.	21.6	4270.	22.5	4336.	23.5	4398.	24.5
1144.	3278.	4054.	20.1	4123.	21.0	4190.	21.9	4256.	22.8	4321.	23.8	4384.	24.7
1210.	3467.	4045.	20.5	4112.	21.4	4178.	22.3	4244.	23.2	4309.	24.1	4372.	25.1
1276.	3656.	4038.	20.9	4104.	21.8	4170.	22.7	4234.	23.6	4298.	24.5	4361.	25.5
1342.	3845.	4035.	21.4	4100.	22.3	4164.	23.2	4228.	24.1	4291.	25.0	4353.	25.9
1408.	4034.	4035.	22.0	4099.	22.8	4162.	23.7	4225.	24.6	4286.	25.5	4348.	26.4
1474.	4223.	4039.	22.6	4102.	23.5	4164.	24.3	4225.	25.2	4285.	26.1	4346.	27.0
1540.	4413.	4047.	23.3	4108.	24.2	4169.	25.0	4229.	25.9	4288.	26.8	4347.	27.7
1606.	4602.	4059.	24.1	4119.	24.9	4178.	25.8	4237.	26.7	4295.	27.6	4352.	28.5
1672.	4791.	4075.	24.9	4133.	25.8	4191.	26.7	4248.	27.5	4305.	28.4	4361.	29.3
1738.	4980.	4095.	25.9	4152.	26.7	4208.	27.6	4264.	28.4	4319.	29.3	4375.	30.3
1804.	5169.	4118.	26.9	4173.	27.8	4228.	28.6	4282.	29.4	4335.	30.3	4393.	31.4
1870.	5358.	4143.	28.0	4197.	28.8	4250.	29.7	4303.	30.5	4355.	31.3	4408.	32.2
1936.	5547.	4170.	29.1	4222.	30.0	4274.	30.8	4325.	31.6	4380.	32.6		
2002.	5736.	4198.	30.3	4249.	31.1	4300.	31.9	4350.	32.7	4401.	33.6		
2068.	5926.	4226.	31.5	4276.	32.3	4326.	33.1	4379.	34.1				
2134.	6115.	4253.	32.6	4303.	33.4	4352.	34.2	4404.	35.2				
2200.	6304.	4280.	33.8	4330.	34.6	4385.	35.7						

Impeller Dia. — 25 1/2 in.
 Tip Speed (FPM) — 6.67 x RPM
 Inlet Dia. — 12 in.
 Area — .7853 sq. ft.
 Outlet Dia. — 10 in.
 Area — .5454 sq. ft.

SIZE
 TBAB 080-290-E

All capacities based on air
 density of .0749 lbs./cu. ft.

MHP includes all drive losses

CFM	OV FT/MIN	28" TP		30" TP		32" TP		34" TP		36" TP		38" TP	
		RPM	MHP	RPM	MHP	RPM	MHP	RPM	MHP	RPM	MHP	RPM	MHP
1440.	2641.	2745.	8.9	2840.	9.6	2934.	10.3						
1548.	2839.	2744.	9.4	2838.	10.1	2930.	10.9	3019.	11.6				
1656.	3037.	2748.	10.0	2840.	10.7	2930.	11.5	3017.	12.2	3103.	13.0	3187.	13.8
1764.	3235.	2755.	10.6	2845.	11.3	2933.	12.1	3019.	12.9	3103.	13.7	3185.	14.5
1872.	3433.	2764.	11.2	2853.	12.0	2940.	12.8	3024.	13.6	3107.	14.4	3187.	15.2
1980.	3631.	2777.	11.9	2864.	12.7	2949.	13.5	3032.	14.3	3113.	15.2	3193.	16.0
2088.	3829.	2792.	12.5	2878.	13.4	2961.	14.2	3043.	15.1	3123.	16.0	3201.	16.8
2196.	4027.	2810.	13.3	2894.	14.1	2976.	15.0	3056.	15.9	3135.	16.8	3211.	17.7
2304.	4225.	2829.	14.0	2911.	14.9	2993.	15.8	3072.	16.7	3149.	17.7	3224.	18.6
2412.	4423.	2849.	14.8	2931.	15.7	3011.	16.7	3089.	17.6	3165.	18.6	3240.	19.6
2520.	4621.	2870.	15.6	2952.	16.6	3031.	17.5	3108.	18.5	3184.	19.6	3258.	20.6
2628.	4819.	2892.	16.4	2973.	17.4	3052.	18.5	3130.	19.5	3205.	20.6	3277.	21.6
2736.	5017.	2914.	17.2	2996.	18.3	3076.	19.5	3152.	20.6	3226.	21.6	3298.	22.7
2844.	5215.	2937.	18.1	3020.	19.3	3100.	20.5	3176.	21.6	3249.	22.7	3320.	23.8
2952.	5413.	2960.	19.0	3044.	20.3	3124.	21.5	3193.	22.4	3266.	23.5	3342.	24.9
3060.	5611.	2982.	19.9	3067.	21.2	3140.	22.2	3215.	23.4	3288.	24.6	3364.	26.0
3168.	5810.	3002.	20.7	3081.	21.8	3161.	23.1	3237.	24.4	3311.	25.7	3387.	27.1
3276.	6008.	3019.	21.5	3101.	22.7	3182.	24.1	3259.	25.4	3333.	26.7	3408.	28.2
3384.	6206.	3033.	22.2	3118.	23.5	3201.	25.0	3280.	26.4	3360.	28.1	3430.	29.3
3492.	6404.	3042.	22.8	3137.	24.6	3219.	25.9	3299.	27.4	3380.	29.1	3450.	30.4
3600.	6602.	3047.	23.2	3147.	25.2	3238.	27.0	3321.	28.6	3398.	30.1	3469.	31.5

CFM	OV FT/MIN	40" TP		42" TP		44" TP		46" TP		48" TP		50" TP	
		RPM	MHP	RPM	MHP	RPM	MHP	RPM	MHP	RPM	MHP	RPM	MHP
1440.	2641.												
1548.	2839.												
1656.	3037.	3268.	14.6	3348.	15.4	3427.	16.3	3504.	17.1	3579.	17.9	3654.	18.8
1764.	3235.	3266.	15.3	3345.	16.2	3422.	17.0	3498.	17.9	3572.	18.7	3646.	19.6
1872.	3433.	3267.	16.1	3344.	16.9	3420.	17.8	3495.	18.7	3568.	19.6	3640.	20.4
1980.	3631.	3270.	16.9	3347.	17.8	3422.	18.6	3495.	19.5	3567.	20.4	3638.	21.3
2088.	3829.	3277.	17.7	3352.	18.6	3426.	19.5	3498.	20.4	3569.	21.3	3639.	22.3
2196.	4027.	3287.	18.6	3361.	19.5	3433.	20.5	3504.	21.4	3574.	22.3	3643.	23.3
2304.	4225.	3299.	19.5	3371.	20.5	3443.	21.4	3513.	22.4	3582.	23.3	3649.	24.3
2412.	4423.	3313.	20.5	3385.	21.5	3455.	22.5	3525.	23.6	3591.	24.4	3658.	25.4
2520.	4621.	3330.	21.6	3400.	22.5	3469.	23.5	3537.	24.5	3604.	25.5	3670.	26.5
2628.	4819.	3348.	22.6	3417.	23.6	3485.	24.6	3552.	25.6	3618.	26.7	3683.	27.7
2736.	5017.	3368.	23.7	3436.	24.7	3502.	25.7	3568.	26.8	3634.	27.9	3698.	29.0
2844.	5215.	3388.	24.8	3455.	25.8	3524.	27.0	3587.	28.0	3652.	29.1		
2952.	5413.	3410.	26.0	3475.	27.0	3541.	28.1	3606.	29.2	3671.	30.4		
3060.	5611.	3431.	27.1	3496.	28.1	3562.	29.3	3627.	30.5	3692.	31.7		
3168.	5810.	3453.	28.2	3521.	29.5	3584.	30.6	3649.	31.8	3713.	33.1		
3276.	6008.	3474.	29.4	3540.	30.6	3607.	31.9	3672.	33.2				
3384.	6206.	3495.	30.5	3563.	31.8	3630.	33.2	3695.	34.6				
3492.	6404.	3520.	31.8	3586.	33.1	3653.	34.5						
3600.	6602.	3538.	32.8	3608.	34.4	3676.	35.9						



Impeller Dia. — 25 1/2 in.
 Tip Speed (FPM) — 6.67 x RPM
 Inlet Dia. — 12 in.
 Area — .7853 sq. ft.
 Outlet Dia. — 10 in.
 Area — .5454 sq. ft.

Blower Model
 TBAB-081-291-E

 Blower Model
 TBAB-081-291-F

SIZE
 TBAB 081-291

All capacities based on air
 density of .0749 lbs./cu. ft.

MHP includes all drive losses

CFM	OV FT/MIN	48" TP		50" TP		52" TP		54" TP		56" TP		58" TP	
		RPM	MHP	RPM	MHP	RPM	MHP	RPM	MHP	RPM	MHP	RPM	MHP
1600.	2934.	3624.	20.1	3696.	21.0	3768.	21.9	3838.	22.9	3907.	23.9	3974.	24.9
1720.	3154.	3625.	21.1	3697.	22.1	3767.	23.1	3837.	24.1	3905.	25.1	3972.	26.1
1840.	3374.	3628.	22.3	3700.	23.3	3770.	24.3	3838.	25.3	3906.	26.3	3972.	27.3
1960.	3594.	3634.	23.5	3705.	24.5	3774.	25.6	3842.	26.6	3909.	27.6	3975.	28.7
2080.	3814.	3643.	24.7	3712.	25.8	3781.	26.9	3848.	27.9	3914.	29.0	3980.	30.1
2200.	4034.	3653.	26.0	3722.	27.1	3790.	28.2	3857.	29.4	3922.	30.4	3987.	31.6
2320.	4254.	3665.	27.4	3734.	28.5	3801.	29.7	3867.	30.8	3932.	31.9	3996.	33.1
2440.	4475.	3679.	28.8	3747.	29.9	3813.	31.1	3879.	32.3	3943.	33.5	4006.	34.7
2560.	4695.	3695.	30.2	3762.	31.4	3828.	32.6	3892.	33.8	3956.	35.1	4019.	36.3
2680.	4915.	3711.	31.6	3778.	32.9	3844.	34.1	3908.	35.4	3971.	36.7	4033.	38.0
2800.	5135.	3730.	33.1	3796.	34.4	3861.	35.7	3924.	37.0	3987.	38.3	4049.	39.7
2920.	5355.	3749.	34.6	3814.	35.9	3879.	37.3	3942.	38.7	4004.	40.0	4066.	41.4
3040.	5575.	3769.	36.1	3834.	37.5	3898.	38.9	3961.	40.3	4023.	41.8	4085.	43.3
3160.	5795.	3789.	37.6	3854.	39.0	3918.	40.5	3981.	42.1	4043.	43.6	4104.	45.1
3280.	6015.	3809.	39.0	3874.	40.6	3939.	42.2	4002.	43.8	4064.	45.4	4124.	46.9
3400.	6235.	3830.	40.5	3896.	42.2	3961.	43.9	4023.	45.6	4085.	47.2	4145.	48.8
3520.	6455.	3851.	42.0	3917.	43.8	3982.	45.6	4045.	47.3	4106.	48.9	4166.	50.6
3640.	6675.	3871.	43.5	3938.	45.3	4003.	47.2	4066.	48.9	4127.	50.7	4186.	52.4
3760.	6895.	3890.	44.8	3958.	46.8	4023.	48.7	4086.	50.6	4147.	52.4	4207.	54.2
3880.	7115.	3908.	46.1	3976.	48.2	4042.	50.2	4105.	52.1	4167.	54.0	4227.	55.9
4000.	7335.	3924.	47.3	3993.	49.5	4060.	51.6	4124.	53.6	4186.	55.6	4246.	57.5

CFM	OV FT/MIN	60" TP		62" TP		64" TP		66" TP		68" TP		70" TP	
		RPM	MHP	RPM	MHP	RPM	MHP	RPM	MHP	RPM	MHP	RPM	MHP
1600.	2934.	4041.	25.8	4106.	26.8	4171.	27.8	4234.	28.9	4297.	29.9	4358.	30.9
1720.	3154.	4038.	27.1	4103.	28.1	4167.	29.1	4230.	30.2	4292.	31.2	4353.	32.3
1840.	3374.	4038.	28.4	4102.	29.4	4165.	30.5	4228.	31.5	4289.	32.6	4350.	33.7
1960.	3594.	4040.	29.8	4103.	30.8	4166.	31.9	4228.	33.0	4289.	34.1	4349.	35.2
2080.	3814.	4044.	31.2	4107.	32.3	4169.	33.4	4230.	34.5	4291.	35.6	4350.	36.8
2200.	4034.	4050.	32.7	4113.	33.8	4174.	35.0	4235.	36.1	4295.	37.3	4354.	38.4
2320.	4254.	4058.	34.3	4120.	35.4	4181.	36.6	4241.	37.8	4301.	39.0	4359.	40.1
2440.	4475.	4069.	35.9	4130.	37.1	4190.	38.3	4250.	39.5	4309.	40.7	4367.	41.9
2560.	4695.	4081.	37.5	4141.	38.8	4201.	40.0	4260.	41.3	4319.	42.5	4376.	43.8
2680.	4915.	4094.	39.2	4155.	40.5	4214.	41.8	4273.	43.1	4330.	44.4	4387.	45.7
2800.	5135.	4110.	41.0	4170.	42.4	4228.	43.7	4286.	45.0	4343.	46.3	4399.	47.6
2920.	5355.	4126.	42.8	4186.	44.2	4244.	45.6	4301.	46.9	4358.	48.2	4415.	49.7
3040.	5575.	4145.	44.7	4203.	46.1	4261.	47.5	4318.	48.9	4374.	50.2		
3160.	5795.	4163.	46.6	4222.	48.0	4279.	49.4	4335.	50.8	4390.	52.2		
3280.	6015.	4183.	48.4	4241.	49.9	4298.	51.4	4353.	52.8	4409.	54.4		
3400.	6235.	4203.	50.3	4261.	51.8	4317.	53.3	4372.	54.8				
3520.	6455.	4224.	52.2	4281.	53.8	4337.	55.3	4391.	56.8				
3640.	6675.	4244.	54.0	4301.	55.7	4357.	57.2	4413.	59.0				
3760.	6895.	4265.	55.9	4321.	57.5	4377.	59.2						
3880.	7115.	4285.	57.6	4341.	59.4	4396.	61.0						
4000.	7335.	4304.	59.4	4361.	61.2								

Impeller Dia. — 24 7/8 in.
 Tip Speed (FPM) — 6.51 x RPM
 Inlet Dia. — 12 in.
 Area — .7853 sq. ft.
 Outlet Dia. — 10 in.
 Area — .5454 sq. ft.

Blower Model
 TBAB 090-310-E

 Blower Model
 TBAB-090-310-F

SIZE
 TBAB 090-310

All capacities based on air
 density of .0749 lbs./cu. ft.

MHP includes all drive losses

CFM	OV FT/MIN	28" TP		30" TP		32" TP		34" TP		36" TP		38" TP	
		RPM	MHP	RPM	MHP	RPM	MHP	RPM	MHP	RPM	MHP	RPM	MHP
2000.	3668.	2768.	12.3	2866.	13.2	2961.	14.2						
2150.	3943.	2763.	13.2	2860.	14.1	2954.	15.1	3046.	16.1	3135.	17.1	3221.	18.0
2300.	4218.	2761.	14.0	2857.	15.0	2950.	16.0	3040.	17.1	3128.	18.1	3214.	19.1
2450.	4493.	2761.	14.9	2855.	16.0	2947.	17.0	3037.	18.1	3124.	19.2	3209.	20.2
2600.	4768.	2764.	15.9	2857.	16.9	2947.	18.0	3036.	19.2	3122.	20.3	3205.	21.4
2750.	5043.	2769.	16.8	2861.	18.0	2950.	19.1	3037.	20.3	3122.	21.4	3205.	22.6
2900.	5318.	2777.	17.8	2867.	19.0	2955.	20.2	3040.	21.4	3124.	22.6	3206.	23.8
3050.	5593.	2787.	18.9	2876.	20.1	2962.	21.3	3046.	22.6	3129.	23.8	3209.	25.1
3200.	5868.	2800.	20.0	2887.	21.2	2971.	22.5	3054.	23.8	3135.	25.1	3215.	26.4
3350.	6143.	2815.	21.1	2900.	22.4	2983.	23.7	3065.	25.1	3144.	26.4	3223.	27.7
3500.	6418.	2832.	22.3	2915.	23.7	2997.	25.0	3077.	26.4	3156.	27.8	3233.	29.1
3650.	6693.	2851.	23.5	2933.	24.9	3013.	26.4	3092.	27.8	3169.	29.2	3244.	30.6
3800.	6968.	2873.	24.9	2953.	26.3	3031.	27.7	3108.	29.2	3184.	30.6	3259.	32.2
3950.	7244.	2897.	26.2	2975.	27.7	3051.	29.2	3128.	30.7	3203.	32.3	3276.	33.8
4100.	7519.	2922.	27.7	2999.	29.2	3076.	30.8	3151.	32.4	3224.	34.0	3295.	35.6
4250.	7794.	2952.	29.3	3029.	31.0	3103.	32.7	3176.	34.3	3247.	35.8	3317.	37.4
4400.	8069.	2978.	30.7	3051.	32.3	3123.	33.9	3195.	35.5	3265.	37.2	3340.	39.3
4550.	8344.	3009.	32.4	3081.	34.0	3151.	35.7	3221.	37.3	3289.	39.0	3357.	40.6
4700.	8619.	3043.	34.2	3113.	35.8	3181.	37.5	3249.	39.2	3316.	40.9	3382.	42.5
4850.	8894.	3080.	36.1	3147.	37.8	3213.	39.4	3279.	41.1	3345.	42.8	3409.	44.5
5000.	9169.	3121.	38.3	3184.	39.9	3248.	41.5	3312.	43.2	3375.	44.9	3438.	46.6

CFM	OV FT/MIN	40" TP		42" TP		44" TP		46" TP		48" TP		50" TP	
		RPM	MHP	RPM	MHP	RPM	MHP	RPM	MHP	RPM	MHP	RPM	MHP
2000.	3668.												
2150.	3943.												
2300.	4218.	3298.	20.2										
2450.	4493.	3292.	21.3	3373.	22.4	3452.	23.5	3530.	24.6				
2600.	4768.	3287.	22.5	3368.	23.7	3446.	24.8	3523.	25.9	3598.	27.1	3672.	28.2
2750.	5043.	3286.	23.7	3365.	24.9	3443.	26.1	3519.	27.3	3593.	28.5	3667.	29.7
2900.	5318.	3286.	25.0	3364.	26.2	3441.	27.5	3516.	28.7	3590.	29.9	3663.	31.2
3050.	5593.	3288.	26.3	3366.	27.6	3441.	28.9	3516.	30.1	3589.	31.4	3661.	32.7
3200.	5868.	3293.	27.7	3369.	29.0	3444.	30.3	3518.	31.6	3590.	32.9	3661.	34.3
3350.	6143.	3299.	29.1	3375.	30.4	3449.	31.8	3521.	33.2	3592.	34.5	3662.	35.9
3500.	6418.	3308.	30.5	3382.	31.9	3455.	33.4	3527.	34.7	3597.	36.1	3666.	37.6
3650.	6693.	3319.	32.1	3392.	33.5	3464.	34.9	3535.	36.4	3604.	37.8	3672.	39.3
3800.	6968.	3332.	33.7	3404.	35.2	3475.	36.6	3545.	38.2	3612.	39.5	3680.	41.1
3950.	7244.	3348.	35.4	3418.	36.8	3487.	38.3	3558.	40.1	3623.	41.3	3689.	42.9
4100.	7519.	3365.	37.1	3434.	38.6	3502.	40.1	3569.	41.6	3635.	43.2		
4250.	7794.	3385.	38.9	3452.	40.4	3517.	41.8	3584.	43.5	3650.	45.1		
4400.	8069.	3406.	40.8	3471.	42.2	3536.	43.8	3601.	45.4	3666.	47.1		
4550.	8344.	3429.	42.7	3492.	44.1	3560.	46.2	3620.	47.4	3684.	49.2		
4700.	8619.	3453.	44.7	3513.	46.0	3577.	47.7	3641.	49.6	3704.	51.4		
4850.	8894.	3478.	46.6	3538.	48.1	3601.	49.9	3664.	51.8				
5000.	9169.	3503.	48.6	3563.	50.2	3627.	52.2	3690.	54.3				



Impeller Dia. — 24 7/8 in.
 Tip Speed (FPM) — 6.51 x RPM
 Inlet Dia. — 12 in.
 Area — .7853 sq. ft.
 Outlet Dia. — 10 in.
 Area — .5454 sq. ft.

Blower Model
 TBAB-091-311-G

Blower Model
 TBAB-091-311-J

SIZE
 TBAB 091-311

All capacities based on air
 density of .0749 lbs./cu. ft.

MHP includes all drive losses

CFM	OV FT/MIN	48" TP		50" TP		52" TP		54" TP		56" TP		58" TP	
		RPM	MHP	RPM	MHP	RPM	MHP	RPM	MHP	RPM	MHP	RPM	MHP
2600.	13242.	3663.	28.4	3739.	29.8	3814.	31.1	3888.	32.5	3960.	33.9	4032.	35.2
2800.	14260.	3663.	30.1	3738.	31.5	3812.	32.9	3885.	34.3	3956.	35.7	4027.	37.2
3000.	15279.	3668.	31.9	3741.	33.3	3814.	34.8	3886.	36.2	3956.	37.7	4026.	39.2
3200.	16297.	3676.	33.9	3748.	35.2	3820.	36.7	3890.	38.2	3960.	39.8	4029.	41.3
3400.	17316.	3689.	36.0	3759.	37.2	3829.	38.8	3899.	40.3	3967.	41.9	4035.	43.5
3600.	18335.	3705.	38.2	3772.	39.4	3842.	41.0	3910.	42.6	3978.	44.2	4045.	45.8
3800.	19353.	3719.	40.0	3789.	41.6	3857.	43.2	3925.	44.9	3991.	46.5	4057.	48.2
4000.	20372.	3740.	42.2	3808.	43.9	3875.	45.6	3942.	47.3	4008.	49.0	4072.	50.7
4200.	21390.	3762.	44.6	3829.	46.3	3896.	48.1	3962.	49.8	4026.	51.6	4090.	53.4
4400.	22409.	3787.	47.1	3853.	48.9	3919.	50.7	3984.	52.5	4048.	54.3	4111.	56.1
4600.	23428.	3813.	49.6	3880.	51.5	3944.	53.4	4008.	55.3	4071.	57.1	4134.	59.0
4800.	24446.	3841.	52.3	3908.	54.3	3972.	56.2	4035.	58.2	4097.	60.1	4158.	62.0
5000.	25465.	3871.	55.0	3938.	57.2	4001.	59.2	4063.	61.2	4125.	63.2	4185.	65.2
5200.	26483.	3916.	59.1	3970.	60.4	4032.	62.3	4093.	64.3	4154.	66.4	4214.	68.4
5400.	27502.	3953.	62.5	4004.	63.6	4064.	65.5	4125.	67.6	4185.	69.7	4244.	71.8
5600.	28521.	3992.	66.1	4039.	66.9	4098.	68.9	4158.	71.0	4217.	73.2	4276.	75.4
5800.	29539.	4033.	69.9	4076.	70.4	4134.	72.4	4193.	74.6	4251.	76.8	4309.	79.1
6000.	30558.	4057.	72.1	4111.	73.8	4170.	76.0	4228.	78.3	4286.	80.6	4344.	82.9
6200.	31576.	4095.	75.7	4168.	79.3	4210.	80.1	4266.	82.1	4323.	84.5	4380.	86.8
6400.	32595.	4134.	79.3	4211.	83.5	4250.	84.1	4322.	88.0	4363.	88.8		
6600.	33614.	4199.	85.5	4234.	85.8	4310.	90.2	4347.	90.7				

CFM	OV FT/MIN	60" TP		62" TP		64" TP		66" TP		68" TP		RPM	
		RPM	MHP	RPM	MHP	RPM	MHP	RPM	MHP	RPM	MHP		
2600.	13242.	4103.	36.7	4172.	38.1	4241.	39.5	4309.	41.0	4376.	42.4		
2800.	14260.	4097.	38.6	4165.	40.1	4233.	41.6	4300.	43.1	4366.	44.6		
3000.	15279.	4095.	40.7	4163.	42.2	4229.	43.7	4296.	45.3	4361.	46.8		
3200.	16297.	4097.	42.8	4163.	44.4	4229.	46.0	4295.	47.6	4359.	49.2		
3400.	17316.	4102.	45.1	4168.	46.7	4233.	48.3	4297.	50.0	4361.	51.6		
3600.	18335.	4110.	47.5	4175.	49.1	4240.	50.8	4303.	52.5	4366.	54.2		
3800.	19353.	4122.	49.9	4186.	51.6	4250.	53.3	4312.	55.1	4374.	56.8		
4000.	20372.	4137.	52.5	4200.	54.2	4262.	56.0	4324.	57.8	4385.	59.6		
4200.	21390.	4154.	55.2	4216.	57.0	4278.	58.8	4339.	60.6	4399.	62.5		
4400.	22409.	4173.	58.0	4235.	59.9	4296.	61.7	4356.	63.6				
4600.	23428.	4195.	60.9	4256.	62.8	4316.	64.8	4376.	66.7				
4800.	24446.	4219.	64.0	4279.	66.0	4339.	67.9	4397.	69.9				
5000.	25465.	4245.	67.2	4304.	69.2	4363.	71.2						
5200.	26483.	4273.	70.5	4332.	72.6	4389.	74.7						
5400.	27502.	4303.	74.0	4360.	76.1								
5600.	28521.	4334.	77.6	4391.	79.8								
5800.	29539.	4366.	81.3										
6000.	30558.	4400.	85.2										
6200.													
6400.													
6600.													

Impeller Dia. — 24 7/8 in.
 Tip Speed (FPM) — 6.51 x RPM
 Inlet Dia. — 14 in.
 Area — 1.069 sq. ft.
 Outlet Dia. — 12 in.
 Area — .7853 sq. ft.

Blower Model
TBAB-100-330-G

Blower Model
TBAB-100-330-H

Blower Model
TBAB-100-330-J

SIZE
TBAB 100-330

All capacities based on air
density of .0749 lbs./cu. ft.

MHP includes all drive losses

CFM	OV FT/MIN	28" TP		30" TP		32" TP		34" TP		36" TP		38" TP	
		RPM	MHP	RPM	MHP	RPM	MHP	RPM	MHP	RPM	MHP	RPM	MHP
3400.	4330.	2762.	23.1	2855.	24.9	2946.	26.8	3035.	28.7	3121.	30.7	3206.	32.7
3655.	4655.	2768.	24.4	2860.	26.3	2949.	28.2	3036.	30.2	3121.	32.2	3204.	34.2
3910.	4979.	2778.	25.7	2868.	27.7	2955.	29.7	3041.	31.7	3125.	33.8	3206.	35.8
4165.	5304.	2790.	27.2	2879.	29.2	2965.	31.3	3049.	33.3	3131.	35.4	3212.	37.6
4420.	5629.	2806.	28.8	2893.	30.8	2978.	32.9	3060.	35.0	3141.	37.2	3220.	39.4
4675.	5954.	2825.	30.5	2910.	32.6	2993.	34.7	3074.	36.9	3154.	39.1	3231.	41.3
4930.	6278.	2846.	32.2	2929.	34.4	3011.	36.6	3091.	38.8	3169.	41.1	3245.	43.3
5185.	6603.	2869.	34.1	2951.	36.3	3032.	38.6	3110.	40.9	3187.	43.2	3262.	45.6
5440.	6928.	2894.	36.1	2975.	38.4	3054.	40.7	3132.	43.0	3208.	45.5	3282.	48.0
5695.	7252.	2920.	38.1	3000.	40.5	3079.	43.0	3157.	45.5	3232.	48.0	3304.	50.5
5950.	7577.	2948.	40.3	3029.	42.9	3108.	45.5	3184.	48.1	3257.	50.6	3328.	53.1
6205.	7902.	2980.	42.9	3061.	45.6	3131.	47.6	3205.	50.1	3278.	52.7	3354.	55.8
6460.	8227.	3005.	44.9	3084.	47.5	3159.	50.1	3233.	52.7	3305.	55.4	3381.	58.7
6715.	8551.	3035.	47.3	3113.	50.1	3188.	52.8	3261.	55.5	3332.	58.2	3408.	61.6
6970.	8876.	3065.	49.9	3143.	52.7	3218.	55.5	3290.	58.3	3361.	61.1	3436.	64.5
7225.	9201.	3095.	52.5	3173.	55.4	3248.	58.3	3320.	61.2	3390.	64.0	3464.	67.5
7480.	9526.	3125.	55.1	3203.	58.2	3278.	61.2	3350.	64.2	3420.	67.1	3491.	70.5
7735.	9850.	3154.	57.9	3233.	61.1	3308.	64.2	3380.	67.3	3458.	71.2	3518.	73.4
7990.	10175.	3181.	60.6	3261.	64.0	3337.	67.2	3410.	70.4	3485.	74.2	3553.	77.3
8245.	10500.	3208.	63.3	3289.	66.9	3366.	70.3	3439.	73.6	3511.	77.1	3579.	80.4
8500.	10825.	3232.	66.0	3315.	69.8	3394.	73.4	3474.	77.7	3540.	80.5	3611.	84.2

CFM	OV FT/MIN	40" TP		42" TP		44" TP		46" TP		48" TP		50" TP	
		RPM	MHP	RPM	MHP	RPM	MHP	RPM	MHP	RPM	MHP	RPM	MHP
3400.	4330.	3288.	34.7	3369.	36.7								
3655.	4655.	3286.	36.3	3365.	38.4	3443.	40.5	3519.	42.6				
3910.	4979.	3286.	38.0	3365.	40.1	3441.	42.3	3517.	44.5	3591.	46.7	3663.	48.9
4165.	5304.	3290.	39.7	3367.	41.9	3443.	44.1	3517.	46.4	3590.	48.7	3661.	51.0
4420.	5629.	3297.	41.6	3373.	43.8	3448.	46.1	3521.	48.4	3592.	50.7	3663.	53.1
4675.	5954.	3307.	43.6	3382.	45.9	3455.	48.2	3527.	50.5	3598.	52.9	3667.	55.3
4930.	6278.	3320.	45.7	3394.	48.1	3466.	50.4	3537.	52.9	3606.	55.2	3674.	57.6
5185.	6603.	3336.	48.0	3408.	50.4	3479.	52.7	3550.	55.4	3617.	57.6	3684.	60.1
5440.	6928.	3355.	50.4	3425.	52.8	3495.	55.2	3563.	57.6	3630.	60.1	3697.	62.7
5695.	7252.	3375.	52.9	3444.	55.3	3512.	57.7	3580.	60.2	3646.	62.8	3712.	65.4
5950.	7577.	3398.	55.5	3465.	57.9	3532.	60.3	3599.	63.0	3664.	65.6		
6205.	7902.	3422.	58.3	3488.	60.6	3558.	63.7	3620.	65.8	3685.	68.6		
6460.	8227.	3447.	61.1	3511.	63.4	3577.	66.1	3643.	68.9	3707.	71.8		
6715.	8551.	3473.	63.9	3537.	66.5	3602.	69.2	3668.	72.1				
6970.	8876.	3499.	66.9	3563.	69.5	3629.	72.5	3694.	75.5				
7225.	9201.	3525.	69.8	3592.	72.8	3658.	76.0						
7480.	9526.	3561.	73.8	3622.	76.3	3688.	79.6						
7735.	9850.	3585.	76.6	3653.	80.0	3712.	82.6						
7990.	10175.	3617.	80.3	3686.	84.0								
8245.	10500.	3650.	84.2	3709.	86.9								
8500.	10825.	3674.	87.2										



Impeller Dia. — 24 1/2 in.
 Tip Speed (FPM) — 6.41 x RPM
 Inlet Dia. — 14 in.
 Area — 1.069 sq. ft.
 Outlet Dia. — 12 in.
 Area — .7853 sq. ft.

SIZE
 TBAB 101-321-J

All capacities based on air
 density of .0749 lbs./cu. ft.

MHP includes all drive losses

CFM	OV FT/MIN	48" TP		50" TP		52" TP		54" TP		56" TP	
		RPM	MHP	RPM	MHP	RPM	MHP	RPM	MHP	RPM	MHP
3600.	4584.	3750.	44.4	3828.	46.9	3906.	49.3	3982.	51.7	4056.	54.1
3850.	4902.	3748.	46.0	3825.	48.5	3902.	50.9	3977.	53.3	4051.	55.8
4100.	5220.	3749.	47.7	3826.	50.2	3901.	52.6	3975.	55.1	4048.	57.6
4350.	5539.	3754.	49.6	3829.	52.0	3903.	54.4	3977.	57.0	4049.	59.5
4600.	5857.	3762.	51.5	3836.	53.9	3909.	56.4	3981.	59.0	4052.	61.6
4850.	6175.	3773.	53.7	3845.	55.9	3917.	58.4	3988.	61.0	4059.	63.7
5100.	6494.	3788.	55.9	3857.	58.0	3928.	60.6	3998.	63.3	4068.	65.9
5350.	6812.	3801.	57.7	3872.	60.3	3942.	62.9	4011.	65.6	4079.	68.3
5600.	7130.	3819.	60.0	3889.	62.6	3958.	65.3	4026.	68.1	4093.	70.8
5850.	7448.	3840.	62.5	3908.	65.2	3977.	67.9	4044.	70.6	4110.	73.4
6100.	7767.	3862.	65.1	3930.	67.8	3997.	70.6	4064.	73.4	4129.	76.2
6350.	8085.	3887.	67.7	3955.	70.6	4021.	73.4	4086.	76.2	4150.	79.1
6600.	8403.	3913.	70.5	3981.	73.5	4046.	76.4	4110.	79.2	4174.	82.2
6850.	8722.	3941.	73.4	4009.	76.5	4073.	79.5	4136.	82.4	4199.	85.4
7100.	9040.	3986.	77.9	4040.	79.8	4102.	82.7	4164.	85.7	4226.	88.7
7350.	9358.	4022.	81.6	4072.	83.2	4133.	86.1	4194.	89.1	4255.	92.2
7600.	9677.	4061.	85.5	4106.	86.8	4165.	89.7	4226.	92.7	4286.	95.9
7850.	9995.	4103.	89.7	4142.	90.6	4199.	93.4	4259.	96.5	4318.	99.7
8100.	10313.	4122.	91.6	4175.	94.1	4234.	97.2	4293.	100.4	4352.	103.6
8350.	10632.	4159.	95.3	4236.	100.5	4275.	101.7	4330.	104.5	4387.	107.7
8600.	10950.	4224.	102.2	4258.	102.7	4335.	108.2	4372.	109.2		
8850.	11268.	4274.	107.2	4301.	107.3	4379.	113.1				

CFM	OV FT/MIN	58" TP		60" TP		62" TP		64" TP		66" TP	
		RPM	MHP	RPM	MHP	RPM	MHP	RPM	MHP	RPM	MHP
3600.	4584.	4130.	56.6	4203.	59.1	4274.	61.7	4345.	64.3		
3850.	4902.	4124.	58.4	4196.	60.9	4266.	63.5	4336.	66.1		
4100.	5220.	4120.	60.2	4191.	62.8	4262.	65.4	4331.	68.1	4399.	70.8
4350.	5539.	4120.	62.1	4190.	64.8	4260.	67.4	4328.	70.1	4396.	72.9
4600.	5857.	4123.	64.2	4192.	66.9	4260.	69.6	4328.	72.3	4395.	75.1
4850.	6175.	4128.	66.4	4196.	69.1	4264.	71.8	4331.	74.6	4397.	77.4
5100.	6494.	4136.	68.6	4204.	71.4	4270.	74.2	4336.	77.0		
5350.	6812.	4147.	71.1	4213.	73.8	4279.	76.6	4345.	79.5		
5600.	7130.	4160.	73.6	4226.	76.4	4291.	79.3	4355.	82.2		
5850.	7448.	4176.	76.3	4241.	79.1	4305.	82.0	4368.	84.9		
6100.	7767.	4194.	79.1	4258.	82.0	4321.	84.9	4383.	87.9		
6350.	8085.	4214.	82.0	4277.	85.0	4339.	87.9				
6600.	8403.	4236.	85.1	4298.	88.1	4360.	91.1				
6850.	8722.	4261.	88.4	4322.	91.4	4383.	94.5				
7100.	9040.	4287.	91.8	4347.	94.8						
7350.	9358.	4315.	95.3	4375.	98.4						
7600.	9677.	4345.	99.0								
7850.	9995.	4377.	102.9								